

Verification Report

Report No. A2180009119101001R1

Page 1 of 62

CENTRE TESTING INTERNATIONAL



**Applicant
Address**

ZHEJIANG CHINT INSTRUMENT&METER CO.,LTD
BRIDGE INDUSTRIAL ZONE, YUEQING CITY, ZHEJIANG PROVINCE,
CHINA

Conclusion

Tested Sample	According to directive	Result
Submitted Sample	RoHS Directive 2011/65/EU with amendment (EU) 2015/863	Pass [#]

[#]:CTi conducted Lead, Cadmium, Mercury, Hexavalent Chromium, PBBs&PBDEs and Phthalates(DBP, BBP, DEHP, DIBP) on the components which were identified by the client, and the results shown on the report comply with the limits set by RoHS Directive 2011/65/EU with amendment(EU) 2015/863.

Tested by

Guodong Jiang

Reviewed by

sha chen

Approved by

Lin Zhang

Date

Mar. 21, 2018



Lin Zhang
Technical Manager

No. R138201460

Centre Testing International (Ningbo) Co.,Ltd. 1-2F, Eastern Factory, No.76, Jinghua Road, High-Tech Zone, Ningbo, Zhejiang, China

Verification Report

Report No. A2180009119101001R1

Page 2 of 62

Report Content

Sample Information.....	1
Test Requested.....	3
Photo(s) of the Product(s).....	4
Test Method.....	6
Test Result(s).....	8
Chemical Test Process.....	44
Photo(s) of the Tested Component(s).....	47
RoHS Directive Exemptions.....	56

Verification Report

Report No. A2180009119101001R1

Page 3 of 62

The following sample(s) and sample information was/were submitted and identified by/on the behalf of the client.

Product Name three-phase smart meter
Sample Received Date Jan. 22, 2018
Testing Period Jan. 22, 2018 to Feb. 13, 2018

Client Reference Information:

Model	Reference voltage (V)	Current specification (A)	Degree of accuracy
DTSU666/ DSSU666	3 × 220/380	1.5(6)A	Class 0.5S
		5(80)A	Class 1
	3 × 380	1.5(6)A	Class 0.5S
		5(80)A	Class 1

Test Requested

1. As specified by client, to screen Lead(Pb), Cadmium(Cd), Mercury(Hg), Chromium(Cr), Bromine(Br), Phthalates 【Dibutyl phthalate(DBP), Benzylbutyl phthalate(BBP), Di-2-ethylhexyl phthalate(DEHP), Diisobutyl phthalate(DIBP)】 in the submitted sample(s).
2. As specified by client, when screening results exceed the screening limit in IEC 62321-3-1:2013 or screening limit of Phthalates in this report, further use of chemical methods are required to test the Lead(Pb), Cadmium(Cd), Mercury(Hg), Hexavalent Chromium(Cr(VI)), Polybrominated Biphenyls(PBBs), Polybrominated Diphenyl Ethers(PBDEs) and Phthalates 【Dibutyl phthalate(DBP), Benzylbutyl phthalate(BBP), Di-2-ethylhexyl phthalate(DEHP), Diisobutyl phthalate(DIBP)】 in the submitted samples.

Verification Report

Report No. A2180009119101001R1

Page 4 of 62

Photo(s) of the Product(s)

three-phase smart meter



Verification Report

Report No. A2180009119101001R1

Page 5 of 62

At the request of client, the sample photo below in this report is provided by applicant and is for reference only.



Verification Report

Report No. A2180009119101001R1

Page 6 of 62

Test Method

A. Screening limits for regulated elements according to IEC 62321-3-1:2013 (Unit: mg/kg)

Element	Polymers	Metals	Composite material
Pb	$BL \leq (700-3\sigma) < X < (1300+3\sigma)$ $\leq OL$	$BL \leq (700-3\sigma) < X < (1300+3\sigma)$ $\leq OL$	$BL \leq (500-3\sigma) < X < (1500+3\sigma)$ $\leq OL$
Cd	$BL \leq (70-3\sigma) < X < (130+3\sigma)$ $\leq OL$	$BL \leq (70-3\sigma) < X < (130+3\sigma)$ $\leq OL$	$LOD < X < (150+3\sigma) \leq OL$
Hg	$BL \leq (700-3\sigma) < X < (1300+3\sigma)$ $\leq OL$	$BL \leq (700-3\sigma) < X < (1300+3\sigma)$ $\leq OL$	$BL \leq (500-3\sigma) < X < (1500+3\sigma)$ $\leq OL$
Cr	$BL \leq (700-3\sigma) < X$	$BL \leq (700-3\sigma) < X$	$BL \leq (500-3\sigma) < X$
Br	$BL \leq (300-3\sigma) < X$	N/A	$BL \leq (250-3\sigma) < X$

B. Screening limits for Phthalates

Test Item(s)	Screening limits(Unit: mg/kg)
Dibutyl phthalate(DBP)	$BL \leq 600 < X$
Benzylbutyl phthalate(BBP)	$BL \leq 600 < X$
Di-2-ethylhexyl phthalate(DEHP)	$BL \leq 600 < X$
Diisobutyl phthalate(DIBP)	$BL \leq 600 < X$

C. Chemical Test

Tested Item(s)	Test Method	Measured Equipment(s)	MDL	Limit
Lead (Pb)	IEC 62321-5:2013	ICP-OES	10 mg/kg	1000 mg/kg
	Refer to IEC 62321-5:2013	ICP-OES	10 mg/kg	
Cadmium (Cd)	IEC 62321-5:2013	ICP-OES	10 mg/kg	100 mg/kg
	Refer to IEC 62321-5:2013	ICP-OES	10 mg/kg	
Mercury (Hg)	IEC 62321-4:2013	ICP-OES	10 mg/kg	1000 mg/kg
	Refer to IEC 62321-4:2013	ICP-OES	10 mg/kg	
Hexavalent Chromium(Cr(VI))	IEC 62321-7-2:2017	UV-Vis	20 mg/kg	1000 mg/kg
	IEC 62321-7-1:2015	UV-Vis	0.10 μ g/cm ² (LOQ)	
Polybrominated Biphenyls (PBBs)	IEC 62321-6:2015	GC-MS	100 mg/kg	1000 mg/kg
Polybrominated Diphenyl Ethers (PBDEs)	IEC 62321-6:2015	GC-MS	100 mg/kg	1000 mg/kg
Phthalates (DBP, BBP, DEHP, DIBP)	IEC 62321-8:2017	GC-MS	50 mg/kg	1000 mg/kg for each

Verification Report

Report No. A2180009119101001R1

Page 7 of 62

Remark:

- BL = Under the screening limit
- OL = Above the screening limit
- X = The range of needing to do further testing
- 3σ = The reproducibility of analytical instruments
- N/A= Not applicable
- LOD= Detection limit
- LOQ = Limit of Quantification, The LOQ of Hexavalent chromium is $0.10 \mu\text{g}/\text{cm}^2$

Verification Report

Report No. A2180009119101001R1

Page 8 of 62

Test Result(s)

Sample No.	Tested Sample/Part Description	Tested Items	XRF Screening Test	Phthalates Screening Test	Chemical Test (mg/kg)	Conclusion	Sample Received/ Resubmitted Date
1	Grey-white plastic	Pb	BL	/	/	PASS	Jan. 22, 2018
		Cd	BL	/	/		
		Hg	BL	/	/		
		Cr(Cr(VI))	BL	/	/		
		Br(PBBs&PBDEs)	IN	/	N.D.		
		DBP	N/A	BL	/		
		BBP	N/A	BL	/		
		DEHP	N/A	BL	/		
		DIBP	N/A	BL	/		
2	Brass metal	Pb	OL	/	#125615	PASS	Jan. 22, 2018
		Cd	BL	/	/		
		Hg	BL	/	/		
		Cr(Cr(VI))	BL	/	/		
		Br(PBBs&PBDEs)	N/A	/	/		
		DBP	N/A	/	/		
		BBP	N/A	/	/		
		DEHP	N/A	/	/		
		DIBP	N/A	/	/		
3	Grey-white plastic	Pb	BL	/	/	PASS	Jan. 22, 2018
		Cd	BL	/	/		
		Hg	BL	/	/		
		Cr(Cr(VI))	BL	/	/		
		Br(PBBs&PBDEs)	IN	/	N.D.		
		DBP	N/A	BL	/		
		BBP	N/A	BL	/		
		DEHP	N/A	BL	/		
		DIBP	N/A	BL	/		
4	Grey-white plastic	Pb	BL	/	/	PASS	Jan. 22, 2018
		Cd	BL	/	/		
		Hg	BL	/	/		
		Cr(Cr(VI))	BL	/	/		
		Br(PBBs&PBDEs)	IN	/	N.D.		
		DBP	N/A	BL	/		
		BBP	N/A	BL	/		
		DEHP	N/A	BL	/		
		DIBP	N/A	BL	/		

Verification Report

Report No. A2180009119101001R1

Page 9 of 62

Sample No.	Tested Sample/Part Description	Tested Items	XRF Screening Test	Phthalates Screening Test	Chemical Test (mg/kg)	Conclusion	Sample Received/ Resubmitted Date
5	Grey-white plastic	Pb	BL	/	/	PASS	Jan. 22, 2018
		Cd	BL	/	/		
		Hg	BL	/	/		
		Cr(Cr(VI))	BL	/	/		
		Br(PBBs&PBDEs)	IN	/	N.D.		
		DBP	N/A	BL	/		
		BBP	N/A	BL	/		
		DEHP	N/A	BL	/		
		DIBP	N/A	BL	/		
6	Colorless transparent plastic	Pb	BL	/	/	PASS	Jan. 22, 2018
		Cd	BL	/	/		
		Hg	BL	/	/		
		Cr(Cr(VI))	BL	/	/		
		Br(PBBs&PBDEs)	BL	/	/		
		DBP	N/A	/	N.D.		
		BBP	N/A	/	N.D.		
		DEHP	N/A	/	N.D.		
		DIBP	N/A	/	N.D.		
7	Plastic with multicolor printing	Pb	BL	/	/	PASS	Jan. 22, 2018
		Cd	BL	/	/		
		Hg	BL	/	/		
		Cr(Cr(VI))	BL	/	/		
		Br(PBBs&PBDEs)	BL	/	/		
		DBP	N/A	BL	/		
		BBP	N/A	BL	/		
		DEHP	N/A	BL	/		
		DIBP	N/A	BL	/		
8	Colorless transparent plastic	Pb	BL	/	/	PASS	Jan. 22, 2018
		Cd	BL	/	/		
		Hg	BL	/	/		
		Cr(Cr(VI))	BL	/	/		
		Br(PBBs&PBDEs)	BL	/	/		
		DBP	N/A	BL	/		
		BBP	N/A	BL	/		
		DEHP	N/A	BL	/		
		DIBP	N/A	BL	/		

Verification Report

Report No. A2180009119101001R1

Page 10 of 62

Sample No.	Tested Sample/Part Description	Tested Items	XRF Screening Test	Phthalates Screening Test	Chemical Test (mg/kg)	Conclusion	Sample Received/ Resubmitted Date
10	Silvery label with black printing	Pb	BL	/	/	PASS	Jan. 22, 2018
		Cd	BL	/	/		
		Hg	BL	/	/		
		Cr(Cr(VI))	BL	/	/		
		Br(PBBs&PBDEs)	BL	/	/		
		DBP	N/A	BL	/		
		BBP	N/A	BL	/		
		DEHP	N/A	BL	/		
		DIBP	N/A	BL	/		
11	Metal with light multicolor plating	Pb	BL	/	/	PASS	Jan. 22, 2018
		Cd	BL	/	/		
		Hg	BL	/	/		
		Cr(Cr(VI))	IN	/	N.D.▼		
		Br(PBBs&PBDEs)	N/A	/	/		
		DBP	N/A	/	/		
		BBP	N/A	/	/		
		DEHP	N/A	/	/		
		DIBP	N/A	/	/		
12	Metal with light multicolor plating	Pb	BL	/	/	PASS	Jan. 22, 2018
		Cd	BL	/	/		
		Hg	BL	/	/		
		Cr(Cr(VI))	IN	/	N.D.▼		
		Br(PBBs&PBDEs)	N/A	/	/		
		DBP	N/A	/	/		
		BBP	N/A	/	/		
		DEHP	N/A	/	/		
		DIBP	N/A	/	/		
13	Metal with light multicolor plating	Pb	BL	/	/	PASS	Jan. 22, 2018
		Cd	BL	/	/		
		Hg	BL	/	/		
		Cr(Cr(VI))	IN	/	N.D.▼		
		Br(PBBs&PBDEs)	N/A	/	/		
		DBP	N/A	/	/		
		BBP	N/A	/	/		
		DEHP	N/A	/	/		
		DIBP	N/A	/	/		

Verification Report

Report No. A2180009119101001R1

Page 11 of 62

Sample No.	Tested Sample/Part Description	Tested Items	XRF Screening Test	Phthalates Screening Test	Chemical Test (mg/kg)	Conclusion	Sample Received/ Resubmitted Date
14	Metal with silvery plating	Pb	BL	/	/	PASS	Jan. 22, 2018
		Cd	BL	/	/		
		Hg	BL	/	/		
		Cr(Cr(VI))	BL	/	/		
		Br(PBBs&PBDEs)	N/A	/	/		
		DBP	N/A	/	/		
		BBP	N/A	/	/		
		DEHP	N/A	/	/		
15	Cupreous metal	DIBP	N/A	/	/	PASS	Jan. 22, 2018
		Pb	BL	/	/		
		Cd	BL	/	/		
		Hg	BL	/	/		
		Cr(Cr(VI))	BL	/	/		
		Br(PBBs&PBDEs)	N/A	/	/		
		DBP	N/A	/	/		
		BBP	N/A	/	/		
16	Cupreous metal	DEHP	N/A	/	/	PASS	Jan. 22, 2018
		DIBP	N/A	/	/		
		Pb	BL	/	/		
		Cd	BL	/	/		
		Hg	BL	/	/		
		Cr(Cr(VI))	BL	/	/		
		Br(PBBs&PBDEs)	N/A	/	/		
		DBP	N/A	/	/		
17	Cupreous metal	BBP	N/A	/	/	PASS	Jan. 22, 2018
		DEHP	N/A	/	/		
		DIBP	N/A	/	/		
		Pb	BL	/	/		
		Cd	BL	/	/		
		Hg	BL	/	/		
		Cr(Cr(VI))	BL	/	/		
		Br(PBBs&PBDEs)	N/A	/	/		

Verification Report

Report No. A2180009119101001R1

Page 12 of 62

Sample No.	Tested Sample/Part Description	Tested Items	XRF Screening Test	Phthalates Screening Test	Chemical Test (mg/kg)	Conclusion	Sample Received/ Resubmitted Date
19	Soldering tin	Pb	BL	/	/	PASS	Jan. 22, 2018
		Cd	BL	/	/		
		Hg	BL	/	/		
		Cr(Cr(VI))	BL	/	/		
		Br(PBBs&PBDEs)	N/A	/	/		
		DBP	N/A	/	/		
		BBP	N/A	/	/		
		DEHP	N/A	/	/		
20	Metal wire with silvery plating	DIBP	N/A	/	/	PASS	Jan. 22, 2018
		Pb	BL	/	/		
		Cd	BL	/	/		
		Hg	BL	/	/		
		Cr(Cr(VI))	BL	/	/		
		Br(PBBs&PBDEs)	N/A	/	/		
		DBP	N/A	/	/		
		BBP	N/A	/	/		
21	Cupreous metal wire	DEHP	N/A	/	/	PASS	Jan. 22, 2018
		DIBP	N/A	/	/		
		Pb	BL	/	/		
		Cd	BL	/	/		
		Hg	BL	/	/		
		Cr(Cr(VI))	BL	/	/		
		Br(PBBs&PBDEs)	N/A	/	/		
		DBP	N/A	/	/		
25	White plastic	BBP	N/A	/	/	PASS	Jan. 22, 2018
		DEHP	N/A	/	/		
		DIBP	N/A	/	/		
		Pb	BL	/	/		
		Cd	BL	/	/		
		Hg	BL	/	/		
		Cr(Cr(VI))	BL	/	/		
		Br(PBBs&PBDEs)	BL	/	/		
		DBP	N/A	BL	/		
		BBP	N/A	BL	/		
		DEHP	N/A	BL	/		
		DIBP	N/A	BL	/		

Verification Report

Report No. A2180009119101001R1

Page 13 of 62

Sample No.	Tested Sample/Part Description	Tested Items	XRF Screening Test	Phthalates Screening Test	Chemical Test (mg/kg)	Conclusion	Sample Received/ Resubmitted Date
26	Metal with silvery plating	Pb	BL	/	/	PASS	Jan. 22, 2018
		Cd	BL	/	/		
		Hg	BL	/	/		
		Cr(Cr(VI))	BL	/	/		
		Br(PBBs&PBDEs)	N/A	/	/		
		DBP	N/A	/	/		
		BBP	N/A	/	/		
		DEHP	N/A	/	/		
27	Metal wire with silvery plating	Pb	BL	/	/	PASS	Jan. 22, 2018
		Cd	BL	/	/		
		Hg	BL	/	/		
		Cr(Cr(VI))	BL	/	/		
		Br(PBBs&PBDEs)	N/A	/	/		
		DBP	N/A	/	/		
		BBP	N/A	/	/		
		DEHP	N/A	/	/		
28	Black wire jacket	Pb	BL	/	/	PASS	Jan. 22, 2018
		Cd	BL	/	/		
		Hg	BL	/	/		
		Cr(Cr(VI))	BL	/	/		
		Br(PBBs&PBDEs)	BL	/	/		
		DBP	N/A	/	97		
		BBP	N/A	/	N.D.		
		DEHP	N/A	/	270		
29	Black plastic	Pb	BL	/	/	PASS	Jan. 22, 2018
		Cd	BL	/	/		
		Hg	BL	/	/		
		Cr(Cr(VI))	BL	/	/		
		Br(PBBs&PBDEs)	IN	/	N.D.		
		DBP	N/A	BL	/		
		BBP	N/A	BL	/		
		DEHP	N/A	BL	/		
29	Black plastic	Pb	BL	/	/	PASS	Jan. 22, 2018
		Cd	BL	/	/		
		Hg	BL	/	/		
		Cr(Cr(VI))	BL	/	/		
		Br(PBBs&PBDEs)	IN	/	N.D.		
		DBP	N/A	BL	/		
		BBP	N/A	BL	/		
		DEHP	N/A	BL	/		

Verification Report

Report No. A2180009119101001R1

Page 14 of 62

Sample No.	Tested Sample/Part Description	Tested Items	XRF Screening Test	Phthalates Screening Test	Chemical Test (mg/kg)	Conclusion	Sample Received/ Resubmitted Date
30	Black solid	Pb	BL	/	/	PASS	Jan. 22, 2018
		Cd	BL	/	/		
		Hg	BL	/	/		
		Cr(Cr(VI))	BL	/	/		
		Br(PBBs&PBDEs)	BL	/	/		
		DBP	N/A	BL	/		
		BBP	N/A	BL	/		
		DEHP	N/A	BL	/		
31	Colorless transparent tape	Pb	BL	/	/	PASS	Jan. 22, 2018 Feb. 7, 2018
		Cd	BL	/	/		
		Hg	BL	/	/		
		Cr(Cr(VI))	BL	/	/		
		Br(PBBs&PBDEs)	BL	/	/		
		DBP	N/A	/	N.D.		
		BBP	N/A	/	N.D.		
		DEHP	N/A	/	N.D.		
32	Red lacquered wire	Pb	BL	/	/	PASS	Jan. 22, 2018
		Cd	BL	/	/		
		Hg	BL	/	/		
		Cr(Cr(VI))	BL	/	/		
		Br(PBBs&PBDEs)	BL	/	/		
		DBP	N/A	BL	/		
		BBP	N/A	BL	/		
		DEHP	N/A	BL	/		
33	Silvery metal	Pb	BL	/	/	PASS	Jan. 22, 2018
		Cd	BL	/	/		
		Hg	BL	/	/		
		Cr(Cr(VI))	IN	/	N.D. ▼		
		Br(PBBs&PBDEs)	N/A	/	/		
		DBP	N/A	/	/		
		BBP	N/A	/	/		
		DEHP	N/A	/	/		
33	Silvery metal	Pb	BL	/	/	PASS	Jan. 22, 2018
		Cd	BL	/	/		
		Hg	BL	/	/		
		Cr(Cr(VI))	IN	/	N.D. ▼		
		Br(PBBs&PBDEs)	N/A	/	/		
		DBP	N/A	/	/		
		BBP	N/A	/	/		
		DEHP	N/A	/	/		

Verification Report

Report No. A2180009119101001R1

Page 15 of 62

Sample No.	Tested Sample/Part Description	Tested Items	XRF Screening Test	Phthalates Screening Test	Chemical Test (mg/kg)	Conclusion	Sample Received/ Resubmitted Date
34	Light blue foam	Pb	BL	/	/	PASS	Jan. 22, 2018
		Cd	BL	/	/		
		Hg	BL	/	/		
		Cr(Cr(VI))	BL	/	/		
		Br(PBBs&PBDEs)	BL	/	/		
		DBP	N/A	BL	/		
		BBP	N/A	BL	/		
		DEHP	N/A	BL	/		
35	White plastic	DIBP	N/A	BL	/	PASS	Jan. 22, 2018
		Pb	BL	/	/		
		Cd	BL	/	/		
		Hg	BL	/	/		
		Cr(Cr(VI))	BL	/	/		
		Br(PBBs&PBDEs)	IN	/	N.D.		
		DBP	N/A	BL	/		
		BBP	N/A	BL	/		
36	Black sleeving with white printing	DEHP	N/A	BL	/	PASS	Jan. 22, 2018 Feb. 7, 2018
		DIBP	N/A	BL	/		
		Pb	BL	/	/		
		Cd	BL	/	/		
		Hg	BL	/	/		
		Cr(Cr(VI))	BL	/	/		
		Br(PBBs&PBDEs)	BL	/	/		
		DBP	N/A	/	N.D.		
37	White wire jacket with black printing	BBP	N/A	/	N.D.	PASS	Jan. 22, 2018 Feb. 7, 2018
		DEHP	N/A	/	N.D.		
		DIBP	N/A	/	N.D.		
		Pb	BL	/	/		
		Cd	BL	/	/		
		Hg	BL	/	/		
		Cr(Cr(VI))	BL	/	/		
		Br(PBBs&PBDEs)	BL	/	/		

Verification Report

Report No. A2180009119101001R1

Page 16 of 62

Sample No.	Tested Sample/Part Description	Tested Items	XRF Screening Test	Phthalates Screening Test	Chemical Test (mg/kg)	Conclusion	Sample Received/ Resubmitted Date
38	Red wire jacket	Pb	BL	/	/	PASS	Jan. 22, 2018 Feb. 7, 2018
		Cd	BL	/	/		
		Hg	BL	/	/		
		Cr(Cr(VI))	BL	/	/		
		Br(PBBs&PBDEs)	BL	/	/		
		DBP	N/A	/	N.D.		
		BBP	N/A	/	N.D.		
		DEHP	N/A	/	N.D.		
		DIBP	N/A	/	N.D.		
39	Metal wire with silvery plating	Pb	BL	/	/	PASS	Jan. 22, 2018
		Cd	BL	/	/		
		Hg	BL	/	/		
		Cr(Cr(VI))	BL	/	/		
		Br(PBBs&PBDEs)	N/A	/	/		
		DBP	N/A	/	/		
		BBP	N/A	/	/		
		DEHP	N/A	/	/		
		DIBP	N/A	/	/		
40	White plastic	Pb	BL	/	/	PASS	Jan. 22, 2018
		Cd	BL	/	/		
		Hg	BL	/	/		
		Cr(Cr(VI))	BL	/	/		
		Br(PBBs&PBDEs)	BL	/	/		
		DBP	N/A	BL	/		
		BBP	N/A	BL	/		
		DEHP	N/A	BL	/		
		DIBP	N/A	BL	/		
41	Metal with silvery plating	Pb	BL	/	/	PASS	Jan. 22, 2018
		Cd	BL	/	/		
		Hg	BL	/	/		
		Cr(Cr(VI))	BL	/	/		
		Br(PBBs&PBDEs)	N/A	/	/		
		DBP	N/A	/	/		
		BBP	N/A	/	/		
		DEHP	N/A	/	/		
		DIBP	N/A	/	/		

Verification Report

Report No. A2180009119101001R1

Page 17 of 62

Sample No.	Tested Sample/Part Description	Tested Items	XRF Screening Test	Phthalates Screening Test	Chemical Test (mg/kg)	Conclusion	Sample Received/ Resubmitted Date
42	White plastic	Pb	BL	/	/	PASS	Jan. 22, 2018
		Cd	BL	/	/		
		Hg	BL	/	/		
		Cr(Cr(VI))	BL	/	/		
		Br(PBBs&PBDEs)	BL	/	/		
		DBP	N/A	BL	/		
		BBP	N/A	BL	/		
		DEHP	N/A	BL	/		
43	White plastic	Pb	BL	/	/	PASS	Jan. 22, 2018
		Cd	BL	/	/		
		Hg	BL	/	/		
		Cr(Cr(VI))	BL	/	/		
		Br(PBBs&PBDEs)	BL	/	/		
		DBP	N/A	BL	/		
		BBP	N/A	BL	/		
		DEHP	N/A	BL	/		
44	Silvery metal pin	Pb	BL	/	/	PASS	Jan. 22, 2018
		Cd	BL	/	/		
		Hg	BL	/	/		
		Cr(Cr(VI))	BL	/	/		
		Br(PBBs&PBDEs)	N/A	/	/		
		DBP	N/A	/	/		
		BBP	N/A	/	/		
		DEHP	N/A	/	/		
45	Green body	Pb	BL	/	/	PASS	Jan. 22, 2018
		Cd	BL	/	/		
		Hg	BL	/	/		
		Cr(Cr(VI))	IN	/	N.D.		
		Br(PBBs&PBDEs)	BL	/	/		
		DBP	N/A	BL	/		
		BBP	N/A	BL	/		
		DEHP	N/A	BL	/		
45	Green body	Pb	BL	/	/	PASS	Jan. 22, 2018
		Cd	BL	/	/		
		Hg	BL	/	/		
		Cr(Cr(VI))	IN	/	N.D.		
		Br(PBBs&PBDEs)	BL	/	/		
		DBP	N/A	BL	/		
		BBP	N/A	BL	/		
		DEHP	N/A	BL	/		

Verification Report

Report No. A2180009119101001R1

Page 18 of 62

Sample No.	Tested Sample/Part Description	Tested Items	XRF Screening Test	Phthalates Screening Test	Chemical Test (mg/kg)	Conclusion	Sample Received/ Resubmitted Date
46	Blue body	Pb	BL	/	/	PASS	Jan. 22, 2018
		Cd	BL	/	/		
		Hg	BL	/	/		
		Cr(Cr(VI))	IN	/	N.D.		
		Br(PBBs&PBDEs)	BL	/	/		
		DBP	N/A	BL	/		
		BBP	N/A	BL	/		
		DEHP	N/A	BL	/		
47	Color ring resistance	Pb	BL	/	/	PASS	Jan. 22, 2018
		Cd	BL	/	/		
		Hg	BL	/	/		
		Cr(Cr(VI))	IN	/	N.D.		
		Br(PBBs&PBDEs)	BL	/	/		
		DBP	N/A	BL	/		
		BBP	N/A	BL	/		
		DEHP	N/A	BL	/		
48	Silvery metal pin	Pb	BL	/	/	PASS	Jan. 22, 2018
		Cd	BL	/	/		
		Hg	BL	/	/		
		Cr(Cr(VI))	BL	/	/		
		Br(PBBs&PBDEs)	N/A	/	/		
		DBP	N/A	/	/		
		BBP	N/A	/	/		
		DEHP	N/A	/	/		
49	Silvery metal pin	Pb	BL	/	/	PASS	Jan. 22, 2018
		Cd	BL	/	/		
		Hg	BL	/	/		
		Cr(Cr(VI))	BL	/	/		
		Br(PBBs&PBDEs)	N/A	/	/		
		DBP	N/A	/	/		
		BBP	N/A	/	/		
		DEHP	N/A	/	/		

Verification Report

Report No. A2180009119101001R1

Page 19 of 62

Sample No.	Tested Sample/Part Description	Tested Items	XRF Screening Test	Phthalates Screening Test	Chemical Test (mg/kg)	Conclusion	Sample Received/ Resubmitted Date
50	Black solid	Pb	BL	/	/	PASS	Jan. 22, 2018
		Cd	BL	/	/		
		Hg	BL	/	/		
		Cr(Cr(VI))	IN	/	N.D.		
		Br(PBBs&PBDEs)	BL	/	/		
		DBP	N/A	BL	/		
		BBP	N/A	BL	/		
		DEHP	N/A	BL	/		
51	Yellow solid	DIBP	N/A	BL	/	PASS	Jan. 22, 2018
		Pb	BL	/	/		
		Cd	BL	/	/		
		Hg	BL	/	/		
		Cr(Cr(VI))	BL	/	/		
		Br(PBBs&PBDEs)	BL	/	/		
		DBP	N/A	BL	/		
		BBP	N/A	BL	/		
52	Red LED	DEHP	N/A	BL	/	PASS	Jan. 22, 2018 Feb. 7, 2018
		DIBP	N/A	BL	/		
		Pb	BL	/	/		
		Cd	BL	/	/		
		Hg	BL	/	/		
		Cr(Cr(VI))	BL	/	/		
		Br(PBBs&PBDEs)	IN	/	N.D.		
		DBP	N/A	/	N.D.		
53	Silvery metal pin	BBP	N/A	/	N.D.	PASS	Jan. 22, 2018
		DEHP	N/A	/	N.D.		
		DIBP	N/A	/	N.D.		
		Pb	BL	/	/		
		Cd	BL	/	/		
		Hg	BL	/	/		
		Cr(Cr(VI))	BL	/	/		
		Br(PBBs&PBDEs)	N/A	/	/		

Verification Report

Report No. A2180009119101001R1

Page 20 of 62

Sample No.	Tested Sample/Part Description	Tested Items	XRF Screening Test	Phthalates Screening Test	Chemical Test (mg/kg)	Conclusion	Sample Received/ Resubmitted Date
54	Black body	Pb	BL	/	/	PASS	Jan. 22, 2018
		Cd	BL	/	/		
		Hg	BL	/	/		
		Cr(Cr(VI))	BL	/	/		
		Br(PBBs&PBDEs)	BL	/	/		
		DBP	N/A	BL	/		
		BBP	N/A	BL	/		
		DEHP	N/A	BL	/		
		DIBP	N/A	BL	/		
55	Black plastic	Pb	BL	/	/	PASS	Jan. 22, 2018
		Cd	BL	/	/		
		Hg	BL	/	/		
		Cr(Cr(VI))	BL	/	/		
		Br(PBBs&PBDEs)	BL	/	/		
		DBP	N/A	BL	/		
		BBP	N/A	BL	/		
		DEHP	N/A	BL	/		
		DIBP	N/A	BL	/		
56	Silvery body	Pb	BL	/	/	PASS	Jan. 22, 2018
		Cd	BL	/	/		
		Hg	BL	/	/		
		Cr(Cr(VI))	BL	/	/		
		Br(PBBs&PBDEs)	BL	/	/		
		DBP	N/A	BL	/		
		BBP	N/A	BL	/		
		DEHP	N/A	BL	/		
		DIBP	N/A	BL	/		
57	Silvery metal pin	Pb	BL	/	/	PASS	Jan. 22, 2018
		Cd	BL	/	/		
		Hg	BL	/	/		
		Cr(Cr(VI))	BL	/	/		
		Br(PBBs&PBDEs)	N/A	/	/		
		DBP	N/A	/	/		
		BBP	N/A	/	/		
		DEHP	N/A	/	/		
		DIBP	N/A	/	/		

Verification Report

Report No. A2180009119101001R1

Page 21 of 62

Sample No.	Tested Sample/Part Description	Tested Items	XRF Screening Test	Phthalates Screening Test	Chemical Test (mg/kg)	Conclusion	Sample Received/ Resubmitted Date
58	Black plastic	Pb	BL	/	/	PASS	Jan. 22, 2018
		Cd	BL	/	/		
		Hg	BL	/	/		
		Cr(Cr(VI))	BL	/	/		
		Br(PBBs&PBDEs)	BL	/	/		
		DBP	N/A	BL	/		
		BBP	N/A	BL	/		
		DEHP	N/A	BL	/		
59	Silvery metal	DIBP	N/A	BL	/	PASS	Jan. 22, 2018
		Pb	BL	/	/		
		Cd	BL	/	/		
		Hg	BL	/	/		
		Cr(Cr(VI))	BL	/	/		
		Br(PBBs&PBDEs)	N/A	/	/		
		DBP	N/A	/	/		
		BBP	N/A	/	/		
60	Bimetal piece	DEHP	N/A	/	/	PASS	Jan. 22, 2018
		DIBP	N/A	/	/		
		Pb	BL	/	/		
		Cd	BL	/	/		
		Hg	BL	/	/		
		Cr(Cr(VI))	BL	/	/		
		Br(PBBs&PBDEs)	N/A	/	/		
		DBP	N/A	/	/		
61	Silvery metal	BBP	N/A	/	/	PASS	Jan. 22, 2018
		DEHP	N/A	/	/		
		DIBP	N/A	/	/		
		Pb	BL	/	/		
		Cd	BL	/	/		
		Hg	BL	/	/		
		Cr(Cr(VI))	BL	/	/		
		Br(PBBs&PBDEs)	N/A	/	/		

Verification Report

Report No. A2180009119101001R1

Page 22 of 62

Sample No.	Tested Sample/Part Description	Tested Items	XRF Screening Test	Phthalates Screening Test	Chemical Test (mg/kg)	Conclusion	Sample Received/ Resubmitted Date
62	Black plastic	Pb	BL	/	/	PASS	Jan. 22, 2018
		Cd	BL	/	/		
		Hg	BL	/	/		
		Cr(Cr(VI))	BL	/	/		
		Br(PBBs&PBDEs)	BL	/	/		
		DBP	N/A	BL	/		
		BBP	N/A	BL	/		
		DEHP	N/A	BL	/		
63	Silvery film	Pb	BL	/	/	PASS	Jan. 22, 2018
		Cd	BL	/	/		
		Hg	BL	/	/		
		Cr(Cr(VI))	BL	/	/		
		Br(PBBs&PBDEs)	IN	/	N.D.		
		DBP	N/A	BL	/		
		BBP	N/A	BL	/		
		DEHP	N/A	BL	/		
64	Grey plastic	Pb	BL	/	/	PASS	Jan. 22, 2018
		Cd	BL	/	/		
		Hg	BL	/	/		
		Cr(Cr(VI))	BL	/	/		
		Br(PBBs&PBDEs)	IN	/	N.D.		
		DBP	N/A	BL	/		
		BBP	N/A	BL	/		
		DEHP	N/A	BL	/		
65	Black solid seal glue	Pb	BL	/	/	PASS	Jan. 22, 2018
		Cd	BL	/	/		
		Hg	BL	/	/		
		Cr(Cr(VI))	BL	/	/		
		Br(PBBs&PBDEs)	IN	/	N.D.		
		DBP	N/A	/	N.D.		
		BBP	N/A	/	N.D.		
		DEHP	N/A	/	N.D.		
		DIBP	N/A	/	N.D.		

Verification Report

Report No. A2180009119101001R1

Page 23 of 62

Sample No.	Tested Sample/Part Description	Tested Items	XRF Screening Test	Phthalates Screening Test	Chemical Test (mg/kg)	Conclusion	Sample Received/ Resubmitted Date
66	Silvery metal pin	Pb	BL	/	/	PASS	Jan. 22, 2018
		Cd	BL	/	/		
		Hg	BL	/	/		
		Cr(Cr(VI))	BL	/	/		
		Br(PBBs&PBDEs)	N/A	/	/		
		DBP	N/A	/	/		
		BBP	N/A	/	/		
		DEHP	N/A	/	/		
67	Green plastic	DIBP	N/A	/	/	PASS	Jan. 22, 2018
		Pb	BL	/	/		
		Cd	BL	/	/		
		Hg	BL	/	/		
		Cr(Cr(VI))	BL	/	/		
		Br(PBBs&PBDEs)	BL	/	/		
		DBP	N/A	BL	/		
		BBP	N/A	BL	/		
68	Green plastic	DEHP	N/A	BL	/	PASS	Jan. 22, 2018
		DIBP	N/A	BL	/		
		Pb	BL	/	/		
		Cd	BL	/	/		
		Hg	BL	/	/		
		Cr(Cr(VI))	BL	/	/		
		Br(PBBs&PBDEs)	BL	/	/		
		DBP	N/A	BL	/		
69.1	Silvery plating	BBP	N/A	BL	/	PASS	Jan. 22, 2018 Feb. 7, 2018
		DEHP	N/A	/	/		
		DIBP	N/A	/	/		
		Pb	N/A	/	N.D.		
		Cd	N/A	/	N.D.		
		Hg	N/A	/	N.D.		
		Cr(Cr(VI))	N/A	/	N.D.▼		
		Br(PBBs&PBDEs)	N/A	/	/		

Verification Report

Report No. A2180009119101001R1

Page 24 of 62

Sample No.	Tested Sample/Part Description	Tested Items	XRF Screening Test	Phthalates Screening Test	Chemical Test (mg/kg)	Conclusion	Sample Received/ Resubmitted Date
69.2	Metal base	Pb	OL	/	#119110	PASS	Jan. 22, 2018 Feb. 7, 2018
		Cd	BL	/	/		
		Hg	BL	/	/		
		Cr(Cr(VI))	BL	/	/		
		Br(PBBs&PBDEs)	N/A	/	/		
		DBP	N/A	/	/		
		BBP	N/A	/	/		
		DEHP	N/A	/	/		
		DIBP	N/A	/	/		
70	Metal with light blue plating	Pb	BL	/	/	PASS	Jan. 22, 2018
		Cd	BL	/	/		
		Hg	BL	/	/		
		Cr(Cr(VI))	BL	/	/		
		Br(PBBs&PBDEs)	N/A	/	/		
		DBP	N/A	/	/		
		BBP	N/A	/	/		
		DEHP	N/A	/	/		
		DIBP	N/A	/	/		
71.1	Silvery plating	Pb	N/A	/	N.D.	PASS	Jan. 22, 2018
		Cd	N/A	/	N.D.		
		Hg	N/A	/	N.D.		
		Cr(Cr(VI))	N/A	/	N.D.▼		
		Br(PBBs&PBDEs)	N/A	/	/		
		DBP	N/A	/	/		
		BBP	N/A	/	/		
		DEHP	N/A	/	/		
		DIBP	N/A	/	/		
71.2	Metal base	Pb	OL	/	#119110	PASS	Jan. 22, 2018
		Cd	BL	/	/		
		Hg	BL	/	/		
		Cr(Cr(VI))	BL	/	/		
		Br(PBBs&PBDEs)	N/A	/	/		
		DBP	N/A	/	/		
		BBP	N/A	/	/		
		DEHP	N/A	/	/		
		DIBP	N/A	/	/		

Verification Report

Report No. A2180009119101001R1

Page 25 of 62

Sample No.	Tested Sample/Part Description	Tested Items	XRF Screening Test	Phthalates Screening Test	Chemical Test (mg/kg)	Conclusion	Sample Received/ Resubmitted Date
72	Silvery metal	Pb	BL	/	/	PASS	Jan. 22, 2018
		Cd	BL	/	/		
		Hg	BL	/	/		
		Cr(Cr(VI))	BL	/	/		
		Br(PBBs&PBDEs)	N/A	/	/		
		DBP	N/A	/	/		
		BBP	N/A	/	/		
		DEHP	N/A	/	/		
73	Black plastic with white printing	DIBP	N/A	/	/	PASS	Jan. 22, 2018
		Pb	BL	/	/		
		Cd	BL	/	/		
		Hg	BL	/	/		
		Cr(Cr(VI))	BL	/	/		
		Br(PBBs&PBDEs)	BL	/	/		
		DBP	N/A	BL	/		
		BBP	N/A	BL	/		
74	Silvery metal	DEHP	N/A	BL	/	PASS	Jan. 22, 2018
		DIBP	N/A	BL	/		
		Pb	BL	/	/		
		Cd	BL	/	/		
		Hg	BL	/	/		
		Cr(Cr(VI))	BL	/	/		
		Br(PBBs&PBDEs)	N/A	/	/		
		DBP	N/A	/	/		
75	Black rubber	BBP	N/A	/	/	PASS	Jan. 22, 2018
		DEHP	N/A	/	/		
		DIBP	N/A	/	/		
		Pb	BL	/	/		
		Cd	BL	/	/		
		Hg	BL	/	/		
		Cr(Cr(VI))	BL	/	/		
		Br(PBBs&PBDEs)	BL	/	/		
		DBP	N/A	/	N.D.		
		BBP	N/A	/	N.D.		
		DEHP	N/A	/	N.D.		
		DIBP	N/A	/	N.D.		

Verification Report

Report No. A2180009119101001R1

Page 26 of 62

Sample No.	Tested Sample/Part Description	Tested Items	XRF Screening Test	Phthalates Screening Test	Chemical Test (mg/kg)	Conclusion	Sample Received/ Resubmitted Date
76	Silver-grey metal	Pb	BL	/	/	PASS	Jan. 22, 2018
		Cd	BL	/	/		
		Hg	BL	/	/		
		Cr(Cr(VI))	BL	/	/		
		Br(PBBs&PBDEs)	N/A	/	/		
		DBP	N/A	/	/		
		BBP	N/A	/	/		
		DEHP	N/A	/	/		
		DIBP	N/A	/	/		
77	Silvery metal	Pb	BL	/	/	PASS	Jan. 22, 2018
		Cd	BL	/	/		
		Hg	BL	/	/		
		Cr(Cr(VI))	BL	/	/		
		Br(PBBs&PBDEs)	N/A	/	/		
		DBP	N/A	/	/		
		BBP	N/A	/	/		
		DEHP	N/A	/	/		
		DIBP	N/A	/	/		
78	Colorless transparent tape	Pb	BL	/	/	PASS	Jan. 22, 2018 Feb. 7, 2018
		Cd	BL	/	/		
		Hg	BL	/	/		
		Cr(Cr(VI))	BL	/	/		
		Br(PBBs&PBDEs)	BL	/	/		
		DBP	N/A	/	N.D.		
		BBP	N/A	/	N.D.		
		DEHP	N/A	/	N.D.		
		DIBP	N/A	/	N.D.		
79	Brown paper	Pb	BL	/	/	PASS	Jan. 22, 2018
		Cd	BL	/	/		
		Hg	BL	/	/		
		Cr(Cr(VI))	BL	/	/		
		Br(PBBs&PBDEs)	BL	/	/		
		DBP	N/A	BL	/		
		BBP	N/A	BL	/		
		DEHP	N/A	BL	/		
		DIBP	N/A	BL	/		

Verification Report

Report No. A2180009119101001R1

Page 27 of 62

Sample No.	Tested Sample/Part Description	Tested Items	XRF Screening Test	Phthalates Screening Test	Chemical Test (mg/kg)	Conclusion	Sample Received/ Resubmitted Date
80	White plastic	Pb	BL	/	/	PASS	Jan. 22, 2018
		Cd	BL	/	/		
		Hg	BL	/	/		
		Cr(Cr(VI))	BL	/	/		
		Br(PBBs&PBDEs)	BL	/	/		
		DBP	N/A	BL	/		
		BBP	N/A	BL	/		
		DEHP	N/A	BL	/		
	White plastic	DIBP	N/A	BL	/	PASS	Jan. 22, 2018
		Pb	BL	/	/		
		Cd	BL	/	/		
		Hg	BL	/	/		
		Cr(Cr(VI))	BL	/	/		
		Br(PBBs&PBDEs)	BL	/	/		
		DBP	N/A	BL	/		
		BBP	N/A	BL	/		
82	Colorless transparent plastic	DEHP	N/A	BL	/	PASS	Jan. 22, 2018
		DIBP	N/A	BL	/		
		Pb	BL	/	/		
		Cd	BL	/	/		
		Hg	BL	/	/		
		Cr(Cr(VI))	BL	/	/		
		Br(PBBs&PBDEs)	BL	/	/		
		DBP	N/A	/	N.D.		
83	Colorless transparent LED	BBP	N/A	/	N.D.	PASS	Jan. 22, 2018 Feb. 7, 2018
		DEHP	N/A	/	N.D.		
		DIBP	N/A	/	N.D.		
		Pb	BL	/	/		
		Cd	BL	/	/		
		Hg	BL	/	/		
		Cr(Cr(VI))	BL	/	/		
		Br(PBBs&PBDEs)	BL	/	/		

Verification Report

Report No. A2180009119101001R1

Page 28 of 62

Sample No.	Tested Sample/Part Description	Tested Items	XRF Screening Test	Phthalates Screening Test	Chemical Test (mg/kg)	Conclusion	Sample Received/ Resubmitted Date
84	Grey plastic	Pb	BL	/	/	PASS	Jan. 22, 2018
		Cd	BL	/	/		
		Hg	BL	/	/		
		Cr(Cr(VI))	BL	/	/		
		Br(PBBs&PBDEs)	BL	/	/		
		DBP	N/A	BL	/		
		BBP	N/A	BL	/		
		DEHP	N/A	BL	/		
		DIBP	N/A	BL	/		
		Pb	BL	/	/		
		Cd	BL	/	/		
		Hg	BL	/	/		
		Cr(Cr(VI))	BL	/	/		
		Br(PBBs&PBDEs)	BL	/	/		
		DBP	N/A	BL	/		
		BBP	N/A	BL	/		
85	White plastic	DEHP	N/A	BL	/	PASS	Jan. 22, 2018
		DIBP	N/A	BL	/		
		Pb	BL	/	/		
		Cd	BL	/	/		
		Hg	BL	/	/		
		Cr(Cr(VI))	BL	/	/		
		Br(PBBs&PBDEs)	N/A	/	/		
		DBP	N/A	/	/		
86	Silvery metal pin	BBP	N/A	/	/	PASS	Jan. 22, 2018
		DEHP	N/A	/	/		
		DIBP	N/A	/	/		
		Pb	BL	/	/		
		Cd	BL	/	/		
		Hg	BL	/	/		
		Cr(Cr(VI))	BL	/	/		
		Br(PBBs&PBDEs)	N/A	/	/		
87	Colorless transparent glass	DBP	N/A	BL	/	PASS	Jan. 22, 2018
		BBP	N/A	BL	/		
		DEHP	N/A	BL	/		
		DIBP	N/A	BL	/		
		Pb	BL	/	/		
		Cd	BL	/	/		
		Hg	BL	/	/		
		Cr(Cr(VI))	BL	/	/		

Verification Report

Report No. A2180009119101001R1

Page 29 of 62

Sample No.	Tested Sample/Part Description	Tested Items	XRF Screening Test	Phthalates Screening Test	Chemical Test (mg/kg)	Conclusion	Sample Received/ Resubmitted Date
88	Colorless transparent glass	Pb	BL	/	/	PASS	Jan. 22, 2018
		Cd	BL	/	/		
		Hg	BL	/	/		
		Cr(Cr(VI))	BL	/	/		
		Br(PBBs&PBDEs)	BL	/	/		
		DBP	N/A	BL	/		
		BBP	N/A	BL	/		
		DEHP	N/A	BL	/		
		DIBP	N/A	BL	/		
89	Black plastic	Pb	BL	/	/	PASS	Jan. 22, 2018
		Cd	BL	/	/		
		Hg	BL	/	/		
		Cr(Cr(VI))	BL	/	/		
		Br(PBBs&PBDEs)	BL	/	/		
		DBP	N/A	BL	/		
		BBP	N/A	BL	/		
		DEHP	N/A	BL	/		
		DIBP	N/A	BL	/		
90	Black solid	Pb	BL	/	/	PASS	Jan. 22, 2018
		Cd	BL	/	/		
		Hg	BL	/	/		
		Cr(Cr(VI))	BL	/	/		
		Br(PBBs&PBDEs)	BL	/	/		
		DBP	N/A	BL	/		
		BBP	N/A	BL	/		
		DEHP	N/A	BL	/		
		DIBP	N/A	BL	/		
91	Yellow adhesive tape	Pb	BL	/	/	PASS	Jan. 22, 2018
		Cd	BL	/	/		
		Hg	BL	/	/		
		Cr(Cr(VI))	BL	/	/		
		Br(PBBs&PBDEs)	BL	/	/		
		DBP	N/A	/	N.D.		
		BBP	N/A	/	N.D.		
		DEHP	N/A	/	N.D.		
		DIBP	N/A	/	N.D.		

Verification Report

Report No. A2180009119101001R1

Page 30 of 62

Sample No.	Tested Sample/Part Description	Tested Items	XRF Screening Test	Phthalates Screening Test	Chemical Test (mg/kg)	Conclusion	Sample Received/ Resubmitted Date
92	Yellow adhesive tape with black printing	Pb	BL	/	/	PASS	Jan. 22, 2018
		Cd	BL	/	/		
		Hg	BL	/	/		
		Cr(Cr(VI))	BL	/	/		
		Br(PBBs&PBDEs)	BL	/	/		
		DBP	N/A	/	N.D.		
		BBP	N/A	/	N.D.		
		DEHP	N/A	/	N.D.		
		DIBP	N/A	/	N.D.		
93	Light yellow solid	Pb	BL	/	/	PASS	Jan. 22, 2018 Feb. 7, 2018
		Cd	BL	/	/		
		Hg	BL	/	/		
		Cr(Cr(VI))	BL	/	/		
		Br(PBBs&PBDEs)	BL	/	/		
		DBP	N/A	BL	/		
		BBP	N/A	BL	/		
		DEHP	N/A	BL	/		
		DIBP	N/A	BL	/		
95	Cupreous metal wire	Pb	BL	/	/	PASS	Jan. 22, 2018
		Cd	BL	/	/		
		Hg	BL	/	/		
		Cr(Cr(VI))	BL	/	/		
		Br(PBBs&PBDEs)	N/A	/	/		
		DBP	N/A	/	/		
		BBP	N/A	/	/		
		DEHP	N/A	/	/		
		DIBP	N/A	/	/		
96	White sleeving	Pb	BL	/	/	PASS	Jan. 22, 2018 Feb. 7, 2018
		Cd	BL	/	/		
		Hg	BL	/	/		
		Cr(Cr(VI))	BL	/	/		
		Br(PBBs&PBDEs)	BL	/	/		
		DBP	N/A	/	N.D.		
		BBP	N/A	/	N.D.		
		DEHP	N/A	/	N.D.		
		DIBP	N/A	/	N.D.		

Verification Report

Report No. A2180009119101001R1

Page 31 of 62

Sample No.	Tested Sample/Part Description	Tested Items	XRF Screening Test	Phthalates Screening Test	Chemical Test (mg/kg)	Conclusion	Sample Received/ Resubmitted Date
98	Cupreous metal wire	Pb	BL	/	/	PASS	Jan. 22, 2018 Feb. 7, 2018
		Cd	BL	/	/		
		Hg	BL	/	/		
		Cr(Cr(VI))	BL	/	/		
		Br(PBBs&PBDEs)	N/A	/	/		
		DBP	N/A	/	/		
		BBP	N/A	/	/		
		DEHP	N/A	/	/		
		DIBP	N/A	/	/		
101	Cupreous metal wire	Pb	BL	/	/	PASS	Jan. 22, 2018
		Cd	BL	/	/		
		Hg	BL	/	/		
		Cr(Cr(VI))	BL	/	/		
		Br(PBBs&PBDEs)	N/A	/	/		
		DBP	N/A	/	/		
		BBP	N/A	/	/		
		DEHP	N/A	/	/		
		DIBP	N/A	/	/		
102	Black plastic	Pb	BL	/	/	PASS	Jan. 22, 2018
		Cd	BL	/	/		
		Hg	BL	/	/		
		Cr(Cr(VI))	BL	/	/		
		Br(PBBs&PBDEs)	BL	/	/		
		DBP	N/A	BL	/		
		BBP	N/A	BL	/		
		DEHP	N/A	BL	/		
		DIBP	N/A	BL	/		
103	Black solid	Pb	BL	/	/	PASS	Jan. 22, 2018
		Cd	BL	/	/		
		Hg	BL	/	/		
		Cr(Cr(VI))	BL	/	/		
		Br(PBBs&PBDEs)	BL	/	/		
		DBP	N/A	BL	/		
		BBP	N/A	BL	/		
		DEHP	N/A	BL	/		
		DIBP	N/A	BL	/		

Verification Report

Report No. A2180009119101001R1

Page 32 of 62

Sample No.	Tested Sample/Part Description	Tested Items	XRF Screening Test	Phthalates Screening Test	Chemical Test (mg/kg)	Conclusion	Sample Received/ Resubmitted Date
104	Yellow adhesive tape	Pb	BL	/	/	PASS	Jan. 22, 2018
		Cd	BL	/	/		
		Hg	BL	/	/		
		Cr(Cr(VI))	BL	/	/		
		Br(PBBs&PBDEs)	BL	/	/		
		DBP	N/A	/	N.D.		
		BBP	N/A	/	N.D.		
		DEHP	N/A	/	N.D.		
105	Silvery metal pin	DIBP	N/A	/	N.D.	PASS	Jan. 22, 2018
		Pb	BL	/	/		
		Cd	BL	/	/		
		Hg	BL	/	/		
		Cr(Cr(VI))	BL	/	/		
		Br(PBBs&PBDEs)	N/A	/	/		
		DBP	N/A	/	/		
		BBP	N/A	/	/		
106	Black body	DEHP	N/A	/	/	PASS	Jan. 22, 2018
		DIBP	N/A	/	/		
		Pb	BL	/	/		
		Cd	BL	/	/		
		Hg	BL	/	/		
		Cr(Cr(VI))	BL	/	/		
		Br(PBBs&PBDEs)	IN	/	N.D.		
		DBP	N/A	BL	/		
107	Black body	BBP	N/A	BL	/	PASS	Jan. 22, 2018
		DEHP	N/A	BL	/		
		DIBP	N/A	BL	/		
		Pb	#2.1×10 ³	/	/		
		Cd	BL	/	/		
		Hg	BL	/	/		
		Cr(Cr(VI))	BL	/	/		
		Br(PBBs&PBDEs)	BL	/	/		

Verification Report

Report No. A2180009119101001R1

Page 33 of 62

Sample No.	Tested Sample/Part Description	Tested Items	XRF Screening Test	Phthalates Screening Test	Chemical Test (mg/kg)	Conclusion	Sample Received/ Resubmitted Date
108	PCB	Pb	BL	/	/	PASS	Jan. 22, 2018
		Cd	BL	/	/		
		Hg	BL	/	/		
		Cr(Cr(VI))	BL	/	/		
		Br(PBBs&PBDEs)	IN	/	N.D.		
		DBP	N/A	BL	/		
		BBP	N/A	BL	/		
		DEHP	N/A	BL	/		
		DIBP	N/A	BL	/		
109	Black body	Pb	BL	/	/	PASS	Jan. 22, 2018
		Cd	BL	/	/		
		Hg	BL	/	/		
		Cr(Cr(VI))	BL	/	/		
		Br(PBBs&PBDEs)	BL	/	/		
		DBP	N/A	BL	/		
		BBP	N/A	BL	/		
		DEHP	N/A	BL	/		
		DIBP	N/A	BL	/		
110	Silvery metal pin	Pb	BL	/	/	PASS	Jan. 22, 2018
		Cd	BL	/	/		
		Hg	BL	/	/		
		Cr(Cr(VI))	BL	/	/		
		Br(PBBs&PBDEs)	N/A	/	/		
		DBP	N/A	/	/		
		BBP	N/A	/	/		
		DEHP	N/A	/	/		
		DIBP	N/A	/	/		
111	Black body	Pb	#2 1.0×10 ⁴	/	/	PASS	Jan. 22, 2018
		Cd	BL	/	/		
		Hg	BL	/	/		
		Cr(Cr(VI))	BL	/	/		
		Br(PBBs&PBDEs)	IN	/	N.D.		
		DBP	N/A	BL	/		
		BBP	N/A	BL	/		
		DEHP	N/A	BL	/		
		DIBP	N/A	BL	/		

Verification Report

Report No. A2180009119101001R1

Page 34 of 62

Sample No.	Tested Sample/Part Description	Tested Items	XRF Screening Test	Phthalates Screening Test	Chemical Test (mg/kg)	Conclusion	Sample Received/ Resubmitted Date
112	Soldering tin	Pb	BL	/	/	PASS	Jan. 22, 2018
		Cd	BL	/	/		
		Hg	BL	/	/		
		Cr(Cr(VI))	BL	/	/		
		Br(PBBs&PBDEs)	N/A	/	/		
		DBP	N/A	/	/		
		BBP	N/A	/	/		
		DEHP	N/A	/	/		
113	Black body	Pb	BL	/	/	PASS	Jan. 22, 2018 Feb. 7, 2018
		Cd	BL	/	/		
		Hg	BL	/	/		
		Cr(Cr(VI))	BL	/	/		
		Br(PBBs&PBDEs)	BL	/	/		
		DBP	N/A	BL	/		
		BBP	N/A	BL	/		
		DEHP	N/A	BL	/		
114	Black body	Pb	BL	/	/	PASS	Jan. 22, 2018 Feb. 7, 2018
		Cd	BL	/	/		
		Hg	BL	/	/		
		Cr(Cr(VI))	BL	/	/		
		Br(PBBs&PBDEs)	IN	/	N.D.		
		DBP	N/A	BL	/		
		BBP	N/A	BL	/		
		DEHP	N/A	BL	/		
115	Yellow-brown body	Pb	BL	/	/	PASS	Jan. 22, 2018 Feb. 7, 2018
		Cd	BL	/	/		
		Hg	BL	/	/		
		Cr(Cr(VI))	BL	/	/		
		Br(PBBs&PBDEs)	BL	/	/		
		DBP	N/A	BL	/		
		BBP	N/A	BL	/		
		DEHP	N/A	BL	/		

Verification Report

Report No. A2180009119101001R1

Page 35 of 62

Sample No.	Tested Sample/Part Description	Tested Items	XRF Screening Test	Phthalates Screening Test	Chemical Test (mg/kg)	Conclusion	Sample Received/ Resubmitted Date
116	Color ring resistance	Pb	BL	/	/	PASS	Jan. 22, 2018
		Cd	BL	/	/		
		Hg	BL	/	/		
		Cr(Cr(VI))	BL	/	/		
		Br(PBBs&PBDEs)	BL	/	/		
		DBP	N/A	BL	/		
		BBP	N/A	BL	/		
		DEHP	N/A	BL	/		
117	Yellow-brown body	DIBP	N/A	BL	/	PASS	Jan. 22, 2018
		Pb	BL	/	/		
		Cd	BL	/	/		
		Hg	BL	/	/		
		Cr(Cr(VI))	BL	/	/		
		Br(PBBs&PBDEs)	BL	/	/		
		DBP	N/A	BL	/		
		BBP	N/A	BL	/		
118	Color ring resistance	DEHP	N/A	BL	/	PASS	Jan. 22, 2018
		DIBP	N/A	BL	/		
		Pb	BL	/	/		
		Cd	BL	/	/		
		Hg	BL	/	/		
		Cr(Cr(VI))	BL	/	/		
		Br(PBBs&PBDEs)	BL	/	/		
		DBP	N/A	BL	/		
119	Black body	BBP	N/A	BL	/	PASS	Jan. 22, 2018
		DEHP	N/A	BL	/		
		DIBP	N/A	BL	/		
		Pb	BL	/	/		
		Cd	BL	/	/		
		Hg	BL	/	/		
		Cr(Cr(VI))	BL	/	/		
		Br(PBBs&PBDEs)	BL	/	/		

Verification Report

Report No. A2180009119101001R1

Page 36 of 62

Sample No.	Tested Sample/Part Description	Tested Items	XRF Screening Test	Phthalates Screening Test	Chemical Test (mg/kg)	Conclusion	Sample Received/ Resubmitted Date
120	Silvery metal pin	Pb	BL	/	/	PASS	Jan. 22, 2018
		Cd	BL	/	/		
		Hg	BL	/	/		
		Cr(Cr(VI))	BL	/	/		
		Br(PBBs&PBDEs)	N/A	/	/		
		DBP	N/A	/	/		
		BBP	N/A	/	/		
		DEHP	N/A	/	/		
		DIBP	N/A	/	/		
121	Rufous body	Pb	#28.0×10 ⁵	/	/	PASS	Jan. 22, 2018
		Cd	BL	/	/		
		Hg	BL	/	/		
		Cr(Cr(VI))	BL	/	/		
		Br(PBBs&PBDEs)	BL	/	/		
		DBP	N/A	BL	/		
		BBP	N/A	BL	/		
		DEHP	N/A	BL	/		
		DIBP	N/A	BL	/		
122	PCB	Pb	BL	/	/	PASS	Jan. 22, 2018
		Cd	BL	/	/		
		Hg	BL	/	/		
		Cr(Cr(VI))	BL	/	/		
		Br(PBBs&PBDEs)	IN	/	N.D.		
		DBP	N/A	BL	/		
		BBP	N/A	BL	/		
		DEHP	N/A	BL	/		
		DIBP	N/A	BL	/		
123	Silvery metal pin	Pb	BL	/	/	PASS	Jan. 22, 2018
		Cd	BL	/	/		
		Hg	BL	/	/		
		Cr(Cr(VI))	BL	/	/		
		Br(PBBs&PBDEs)	N/A	/	/		
		DBP	N/A	/	/		
		BBP	N/A	/	/		
		DEHP	N/A	/	/		
		DIBP	N/A	/	/		

Verification Report

Report No. A2180009119101001R1

Page 37 of 62

Sample No.	Tested Sample/Part Description	Tested Items	XRF Screening Test	Phthalates Screening Test	Chemical Test (mg/kg)	Conclusion	Sample Received/ Resubmitted Date
125	Silvery metal pin	Pb	BL	/	/	PASS	Jan. 22, 2018
		Cd	BL	/	/		
		Hg	BL	/	/		
		Cr(Cr(VI))	BL	/	/		
		Br(PBBs&PBDEs)	N/A	/	/		
		DBP	N/A	/	/		
		BBP	N/A	/	/		
		DEHP	N/A	/	/		
		DIBP	N/A	/	/		
126	Black body	Pb	BL	/	/	PASS	Jan. 22, 2018
		Cd	BL	/	/		
		Hg	BL	/	/		
		Cr(Cr(VI))	BL	/	/		
		Br(PBBs&PBDEs)	BL	/	/		
		DBP	N/A	BL	/		
		BBP	N/A	BL	/		
		DEHP	N/A	BL	/		
		DIBP	N/A	BL	/		
127	Black body	Pb	BL	/	/	PASS	Jan. 22, 2018 Feb. 7, 2018
		Cd	BL	/	/		
		Hg	BL	/	/		
		Cr(Cr(VI))	BL	/	/		
		Br(PBBs&PBDEs)	BL	/	/		
		DBP	N/A	BL	/		
		BBP	N/A	BL	/		
		DEHP	N/A	BL	/		
		DIBP	N/A	BL	/		
128	Black body	Pb	BL	/	/	PASS	Jan. 22, 2018
		Cd	BL	/	/		
		Hg	BL	/	/		
		Cr(Cr(VI))	BL	/	/		
		Br(PBBs&PBDEs)	BL	/	/		
		DBP	N/A	BL	/		
		BBP	N/A	BL	/		
		DEHP	N/A	BL	/		
		DIBP	N/A	BL	/		

Verification Report

Report No. A2180009119101001R1

Page 38 of 62

Sample No.	Tested Sample/Part Description	Tested Items	XRF Screening Test	Phthalates Screening Test	Chemical Test (mg/kg)	Conclusion	Sample Received/ Resubmitted Date
129	Black body	Pb	BL	/	/	PASS	Jan. 22, 2018
		Cd	BL	/	/		
		Hg	BL	/	/		
		Cr(Cr(VI))	BL	/	/		
		Br(PBBs&PBDEs)	BL	/	/		
		DBP	N/A	BL	/		
		BBP	N/A	BL	/		
		DEHP	N/A	BL	/		
		DIBP	N/A	BL	/		
130	Black plastic	Pb	BL	/	/	PASS	Jan. 22, 2018
		Cd	BL	/	/		
		Hg	BL	/	/		
		Cr(Cr(VI))	BL	/	/		
		Br(PBBs&PBDEs)	IN	/	N.D.		
		DBP	N/A	BL	/		
		BBP	N/A	BL	/		
		DEHP	N/A	BL	/		
		DIBP	N/A	BL	/		
131	Black body	Pb	BL	/	/	PASS	Jan. 22, 2018
		Cd	BL	/	/		
		Hg	BL	/	/		
		Cr(Cr(VI))	BL	/	/		
		Br(PBBs&PBDEs)	IN	/	N.D.		
		DBP	N/A	BL	/		
		BBP	N/A	BL	/		
		DEHP	N/A	BL	/		
		DIBP	N/A	BL	/		
132	Black body	Pb	#25.1×10 ⁴	/	/	PASS	Jan. 22, 2018
		Cd	BL	/	/		
		Hg	BL	/	/		
		Cr(Cr(VI))	BL	/	/		
		Br(PBBs&PBDEs)	BL	/	/		
		DBP	N/A	BL	/		
		BBP	N/A	BL	/		
		DEHP	N/A	BL	/		
		DIBP	N/A	BL	/		

Verification Report

Report No. A2180009119101001R1

Page 39 of 62

Sample No.	Tested Sample/Part Description	Tested Items	XRF Screening Test	Phthalates Screening Test	Chemical Test (mg/kg)	Conclusion	Sample Received/ Resubmitted Date
133	Black body	Pb	BL	/	/	PASS	Jan. 22, 2018
		Cd	BL	/	/		
		Hg	BL	/	/		
		Cr(Cr(VI))	BL	/	/		
		Br(PBBs&PBDEs)	IN	/	N.D.		
		DBP	N/A	BL	/		
		BBP	N/A	BL	/		
		DEHP	N/A	BL	/		
		DIBP	N/A	BL	/		
134	Brown body	Pb	BL	/	/	PASS	Jan. 22, 2018 Feb. 7, 2018
		Cd	BL	/	/		
		Hg	BL	/	/		
		Cr(Cr(VI))	IN	/	N.D.		
		Br(PBBs&PBDEs)	BL	/	/		
		DBP	N/A	BL	/		
		BBP	N/A	BL	/		
		DEHP	N/A	BL	/		
		DIBP	N/A	BL	/		
135	PCB	Pb	BL	/	/	PASS	Jan. 22, 2018
		Cd	BL	/	/		
		Hg	BL	/	/		
		Cr(Cr(VI))	BL	/	/		
		Br(PBBs&PBDEs)	IN	/	N.D.		
		DBP	N/A	BL	/		
		BBP	N/A	BL	/		
		DEHP	N/A	BL	/		
		DIBP	N/A	BL	/		
136	White body	Pb	BL	/	/	PASS	Jan. 22, 2018 Feb. 7, 2018
		Cd	BL	/	/		
		Hg	BL	/	/		
		Cr(Cr(VI))	BL	/	/		
		Br(PBBs&PBDEs)	BL	/	/		
		DBP	N/A	BL	/		
		BBP	N/A	BL	/		
		DEHP	N/A	BL	/		
		DIBP	N/A	BL	/		

Verification Report

Report No. A2180009119101001R1

Page 40 of 62

Sample No.	Tested Sample/Part Description	Tested Items	XRF Screening Test	Phthalates Screening Test	Chemical Test (mg/kg)	Conclusion	Sample Received/ Resubmitted Date
137	Black chip resistor	Pb	#23.0×10 ³	/	/	PASS	Jan. 22, 2018 Feb. 7, 2018
		Cd	BL	/	/		
		Hg	BL	/	/		
		Cr(Cr(VI))	IN	/	N.D.		
		Br(PBBs&PBDEs)	BL	/	/		
		DBP	N/A	BL	/		
		BBP	N/A	BL	/		
		DEHP	N/A	BL	/		
		DIBP	N/A	BL	/		
138	Plastic with multicolor printing	Pb	BL	/	/	PASS	Jan. 22, 2018
		Cd	BL	/	/		
		Hg	BL	/	/		
		Cr(Cr(VI))	BL	/	/		
		Br(PBBs&PBDEs)	BL	/	/		
		DBP	N/A	/	N.D.		
		BBP	N/A	/	N.D.		
		DEHP	N/A	/	N.D.		
		DIBP	N/A	/	N.D.		
139	Silvery label with black printing	Pb	BL	/	/	PASS	Jan. 22, 2018
		Cd	BL	/	/		
		Hg	BL	/	/		
		Cr(Cr(VI))	BL	/	/		
		Br(PBBs&PBDEs)	BL	/	/		
		DBP	N/A	BL	/		
		BBP	N/A	BL	/		
		DEHP	N/A	BL	/		
		DIBP	N/A	BL	/		
140	Plastic with multicolor printing	Pb	BL	/	/	PASS	Jan. 22, 2018
		Cd	BL	/	/		
		Hg	BL	/	/		
		Cr(Cr(VI))	BL	/	/		
		Br(PBBs&PBDEs)	BL	/	/		
		DBP	N/A	/	N.D.		
		BBP	N/A	/	N.D.		
		DEHP	N/A	/	N.D.		
		DIBP	N/A	/	N.D.		

Verification Report

Report No. A2180009119101001R1

Page 41 of 62

Sample No.	Tested Sample/Part Description	Tested Items	XRF Screening Test	Phthalates Screening Test	Chemical Test (mg/kg)	Conclusion	Sample Received/ Resubmitted Date
141	Silvery label with black printing	Pb	BL	/	/	PASS	Jan. 22, 2018
		Cd	BL	/	/		
		Hg	BL	/	/		
		Cr(Cr(VI))	BL	/	/		
		Br(PBBs&PBDEs)	BL	/	/		
		DBP	N/A	BL	/		
		BBP	N/A	BL	/		
		DEHP	N/A	BL	/		
		DIBP	N/A	BL	/		
147	Metal with silvery plating	Pb	BL	/	/	PASS	Jan. 22, 2018
		Cd	BL	/	/		
		Hg	BL	/	/		
		Cr(Cr(VI))	BL	/	/		
		Br(PBBs&PBDEs)	N/A	/	/		
		DBP	N/A	/	/		
		BBP	N/A	/	/		
		DEHP	N/A	/	/		
		DIBP	N/A	/	/		
148	Plastic with multicolor printing	Pb	BL	/	/	PASS	Jan. 22, 2018
		Cd	BL	/	/		
		Hg	BL	/	/		
		Cr(Cr(VI))	BL	/	/		
		Br(PBBs&PBDEs)	BL	/	/		
		DBP	N/A	/	N.D.		
		BBP	N/A	/	N.D.		
		DEHP	N/A	/	N.D.		
		DIBP	N/A	/	N.D.		
149	Silvery label with black printing	Pb	BL	/	/	PASS	Jan. 22, 2018
		Cd	BL	/	/		
		Hg	BL	/	/		
		Cr(Cr(VI))	BL	/	/		
		Br(PBBs&PBDEs)	BL	/	/		
		DBP	N/A	BL	/		
		BBP	N/A	BL	/		
		DEHP	N/A	BL	/		
		DIBP	N/A	BL	/		

Verification Report

Report No. A2180009119101001R1

Page 42 of 62

Remark:

- N.D. = Not Detected (<MDL or LOQ)
- MDL = Method Detection Limit
- mg/kg = ppm = parts per million
- 1000mg/kg=0.1%
- /=Not tested
- IN= Uncertain, Further chemical test
- N/A= Not applicable
- BL = Under the screening limit
- OL = Further chemical test will be conducted while the result is above the screening limit.
- ▼ The sample is negative for Cr(VI) – The Cr(VI) concentration is below $0.10\mu\text{g}/\text{cm}^2$.
The coating is considered a non-Cr(VI) based coating.
- When conducting the test for PBBs&PBDEs, XRF was introduced to screen Br Exclusively; When conducting the test for Hexavalent Chromium, XRF was introduced to screen Chromium exclusively.
- ^{#1} According to the client's statement, the material of the sample(s) fall into exemption items 6(c) according to EU Directive 2011/65/EU: Copper alloy containing up to 4% lead by weight.
^{#2} According to the client's statement, the material of the sample(s) fall into exemption items 7(c)-IV according to EU Directive 2011/65/EU: Lead in PZT based dielectric ceramic materials for capacitors being part of integrated circuits or discrete semiconductors.

According to the client's statement, the sample material reference information see table:

Sample No.	Sample No. in this Report
3	1
4	1
5	1
16	15
17	15
40	25
42	25
43	25
68	67
71.1	69.1
71.2	69.2
112	19
118	116
122	108
135	108
139	10
140	138
141	10

Verification Report

Report No. A2180009119101001R1

Page 43 of 62

Sample No.	Sample No. in this Report
148	138
149	10

Note: This testing report displaces the original report of No. A2180009119101001, and the original one No. A2180009119101001 was invalid since the date of this testing report released.

Verification Report

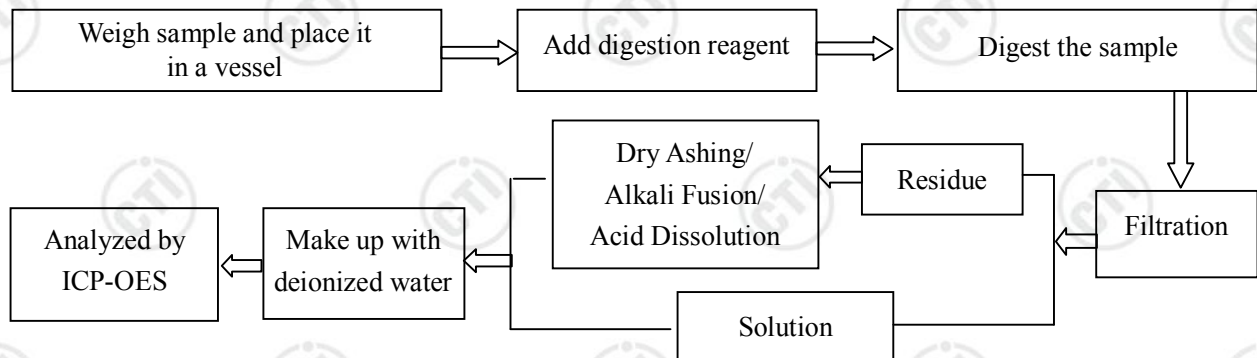
Report No. A2180009119101001R1

Page 44 of 62

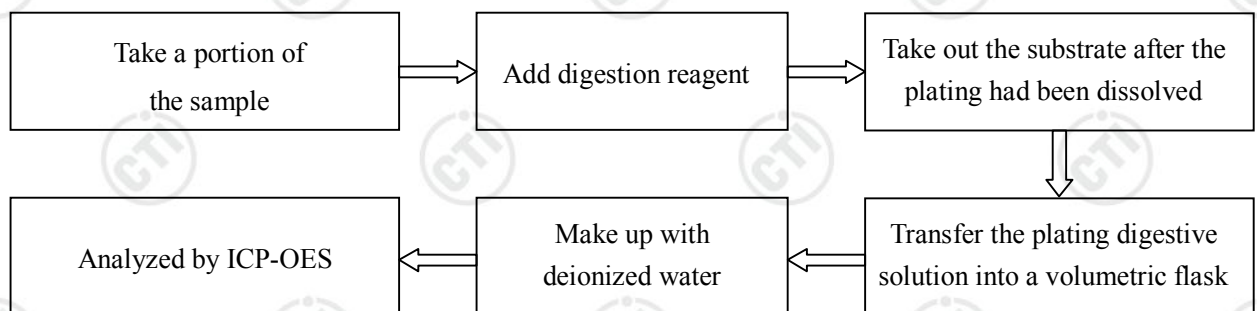
Chemical Test Process

1. Lead (Pb), Cadmium (Cd)

1) IEC 62321-5:2013

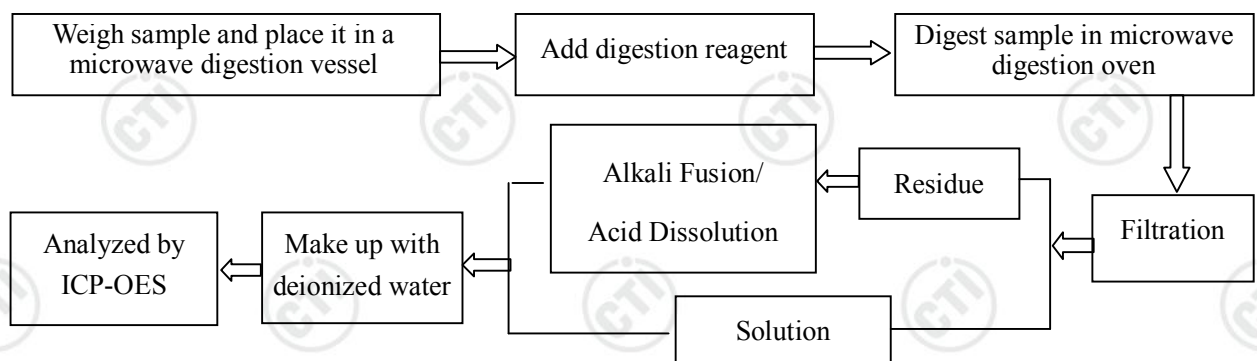


2) Refer to IEC 62321-5:2013



2. Mercury (Hg)

1) IEC 62321-4:2013

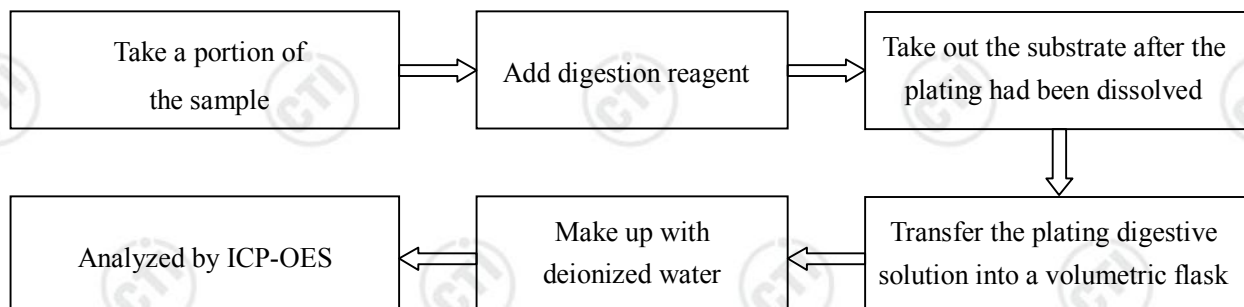


Verification Report

Report No. A2180009119101001R1

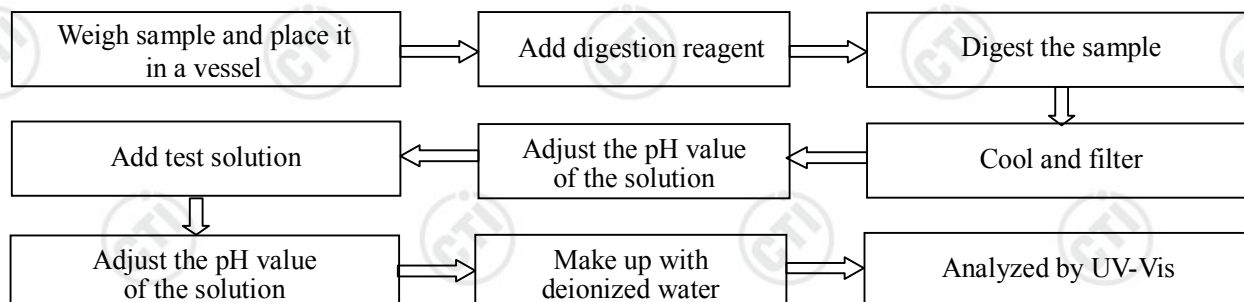
Page 45 of 62

2) Refer to EC 62321-4:2013

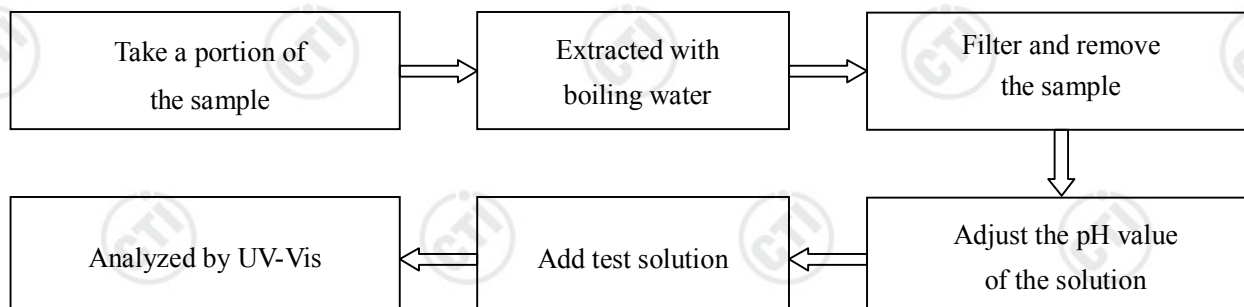


3. Hexavalent Chromium (Cr(VI))

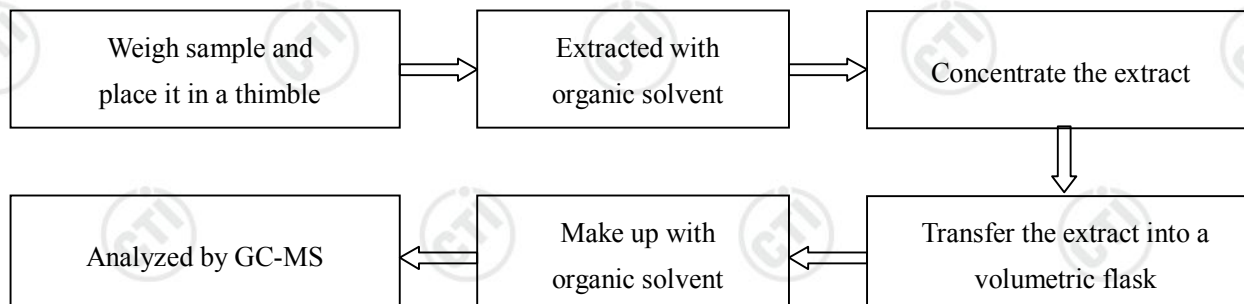
1) IEC 62321-7-2:2017



2) IEC 62321-7-1:2015



4. Polybrominated Biphenyls(PBBs), Polybrominated Diphenyl Ethers(PBDEs)

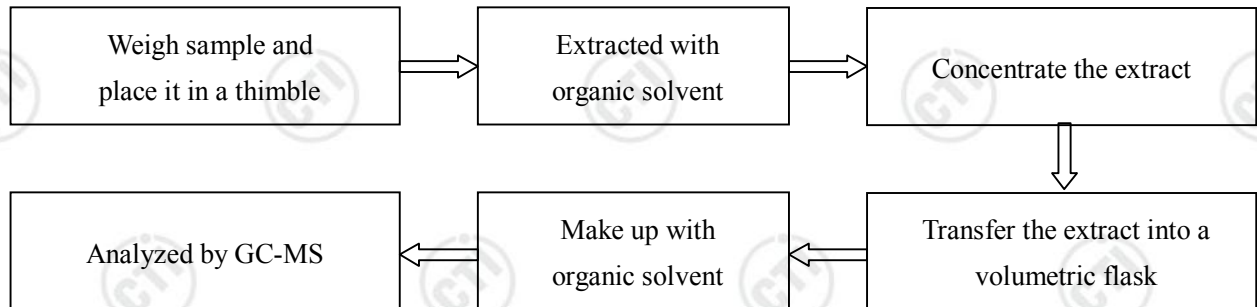


Verification Report

Report No. A2180009119101001R1

Page 46 of 62

5. Phthalates(DBP, BBP, DEHP, DIBP)

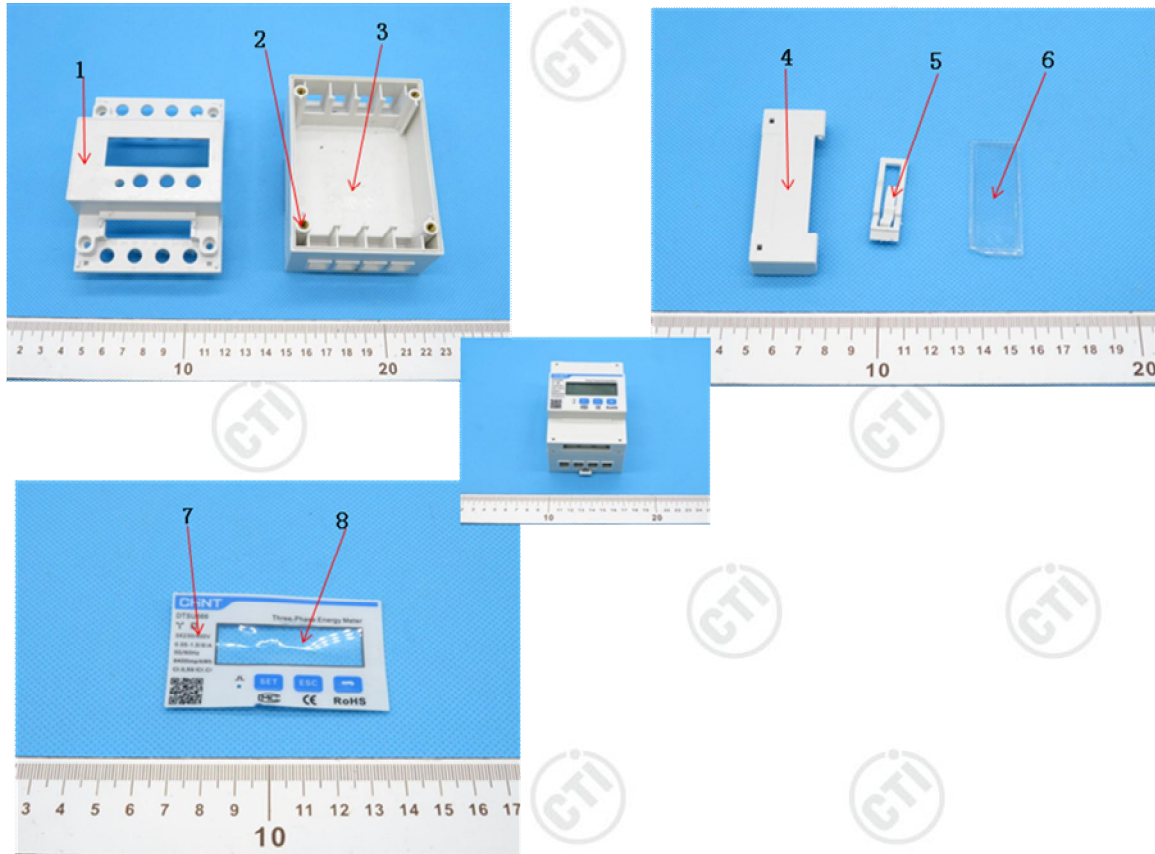


Verification Report

Report No. A2180009119101001R1

Page 47 of 62

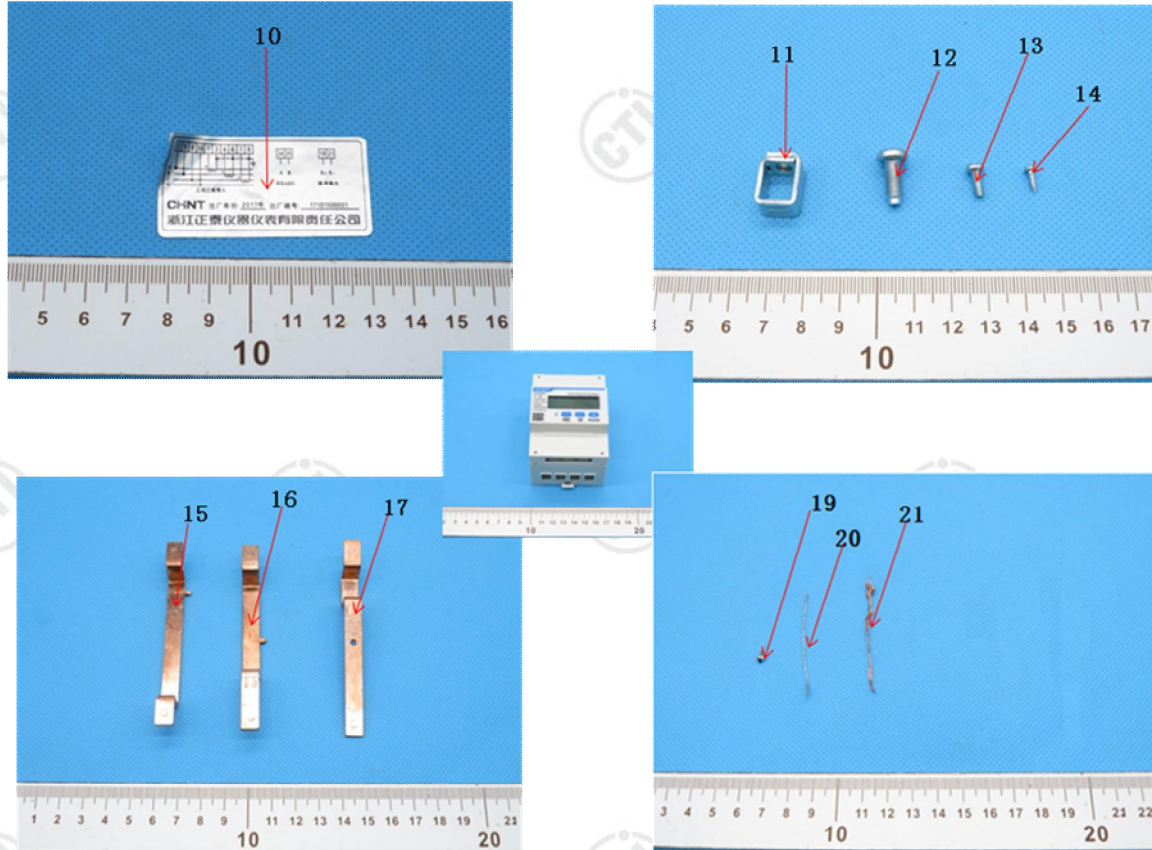
Photo(s) of the tested component(s)



Verification Report

Report No. A2180009119101001R1

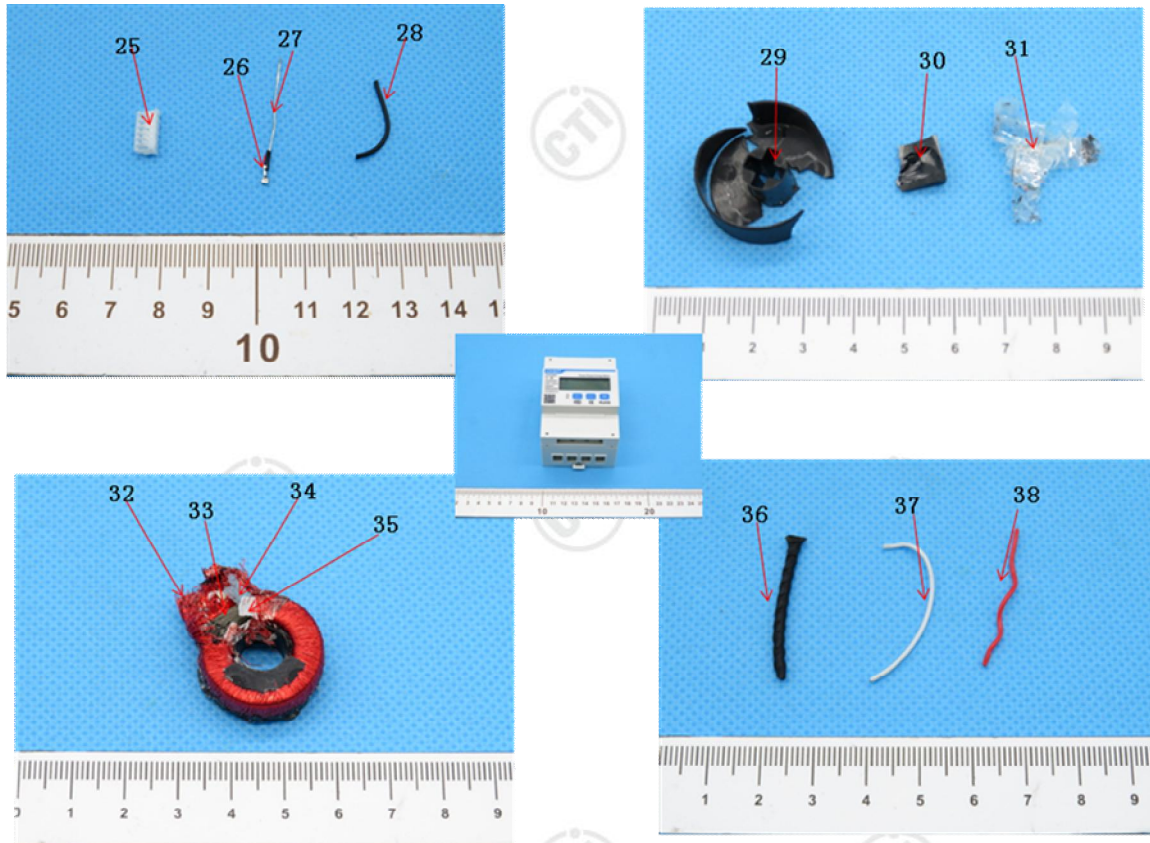
Page 48 of 62



Verification Report

Report No. A2180009119101001R1

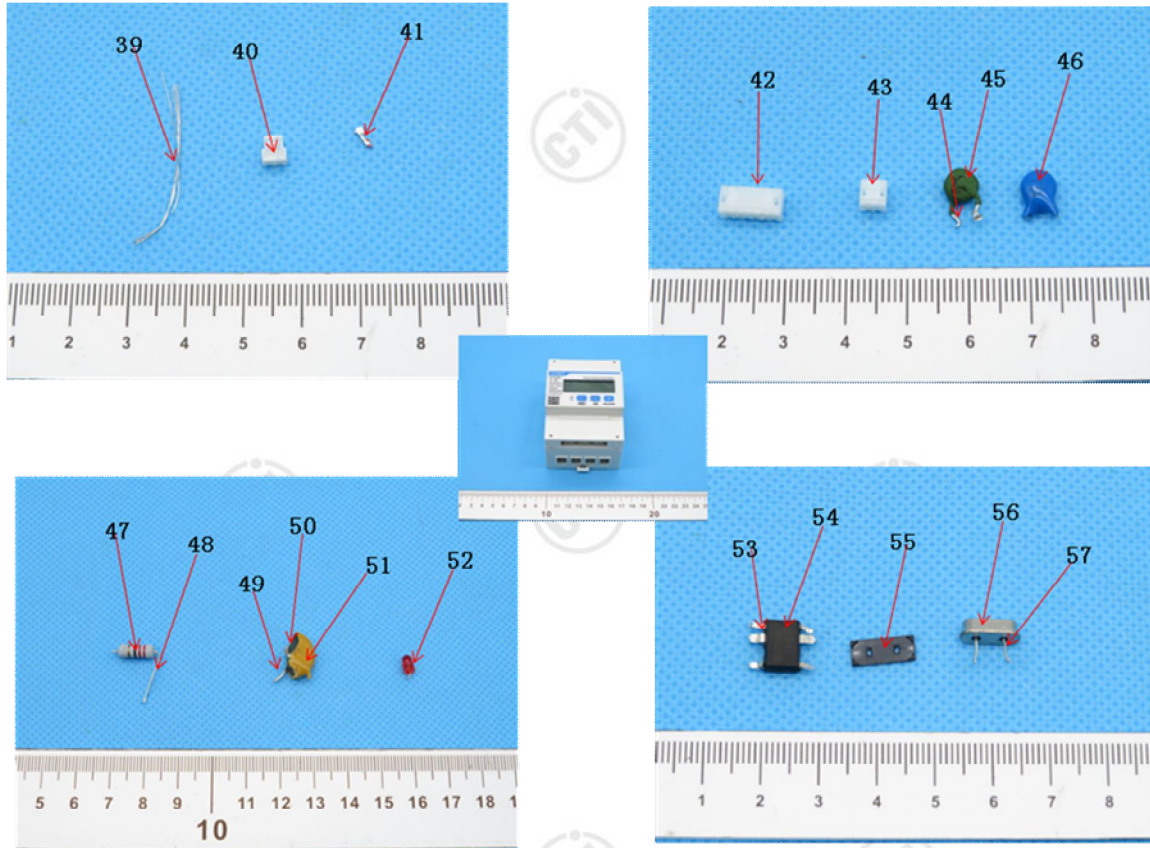
Page 49 of 62



Verification Report

Report No. A2180009119101001R1

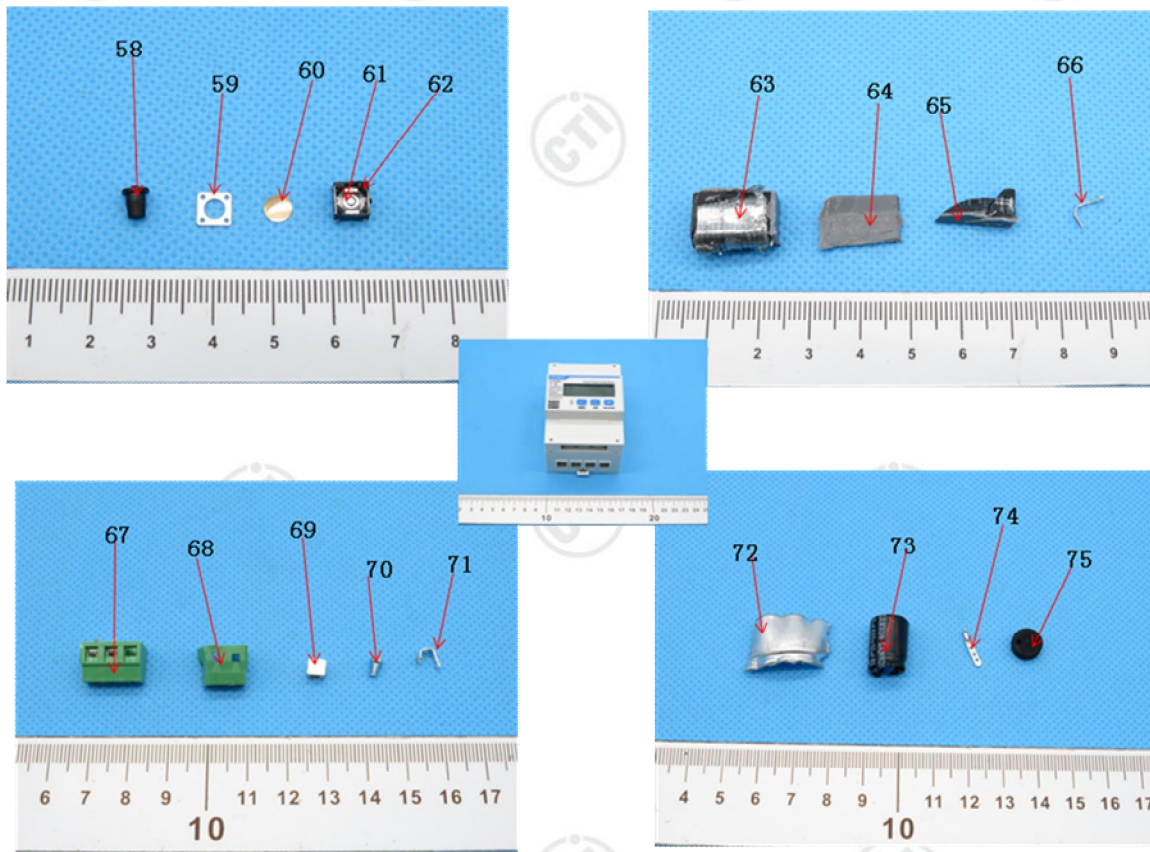
Page 50 of 62



Verification Report

Report No. A2180009119101001R1

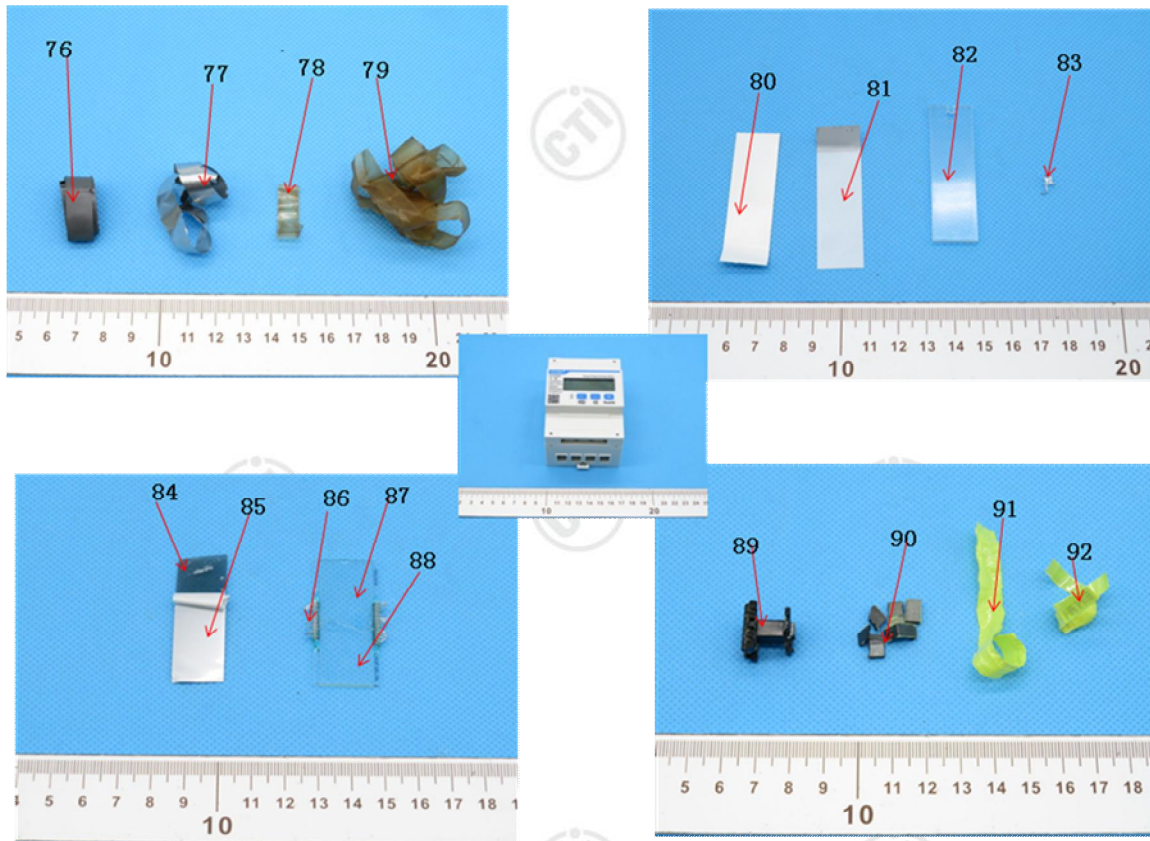
Page 51 of 62



Verification Report

Report No. A2180009119101001R1

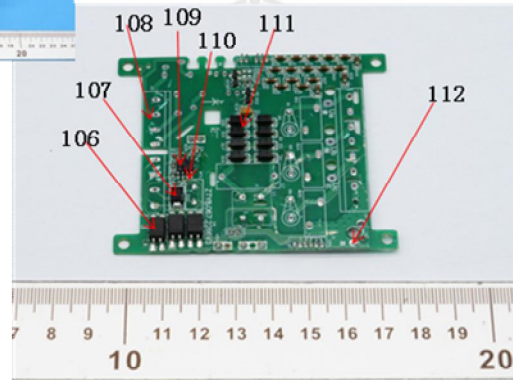
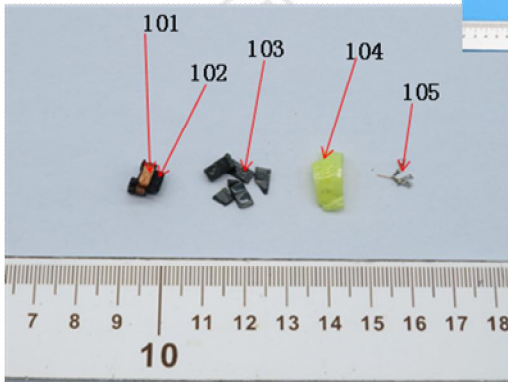
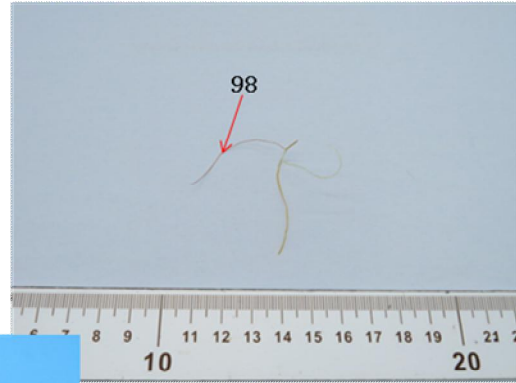
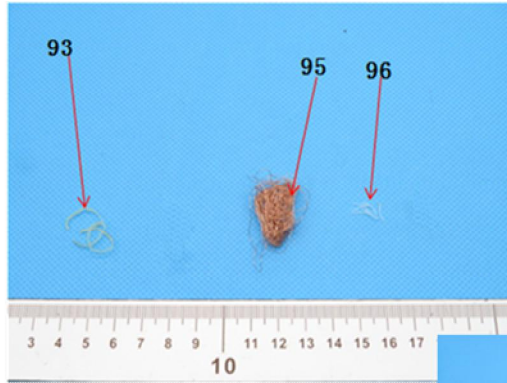
Page 52 of 62



Verification Report

Report No. A2180009119101001R1

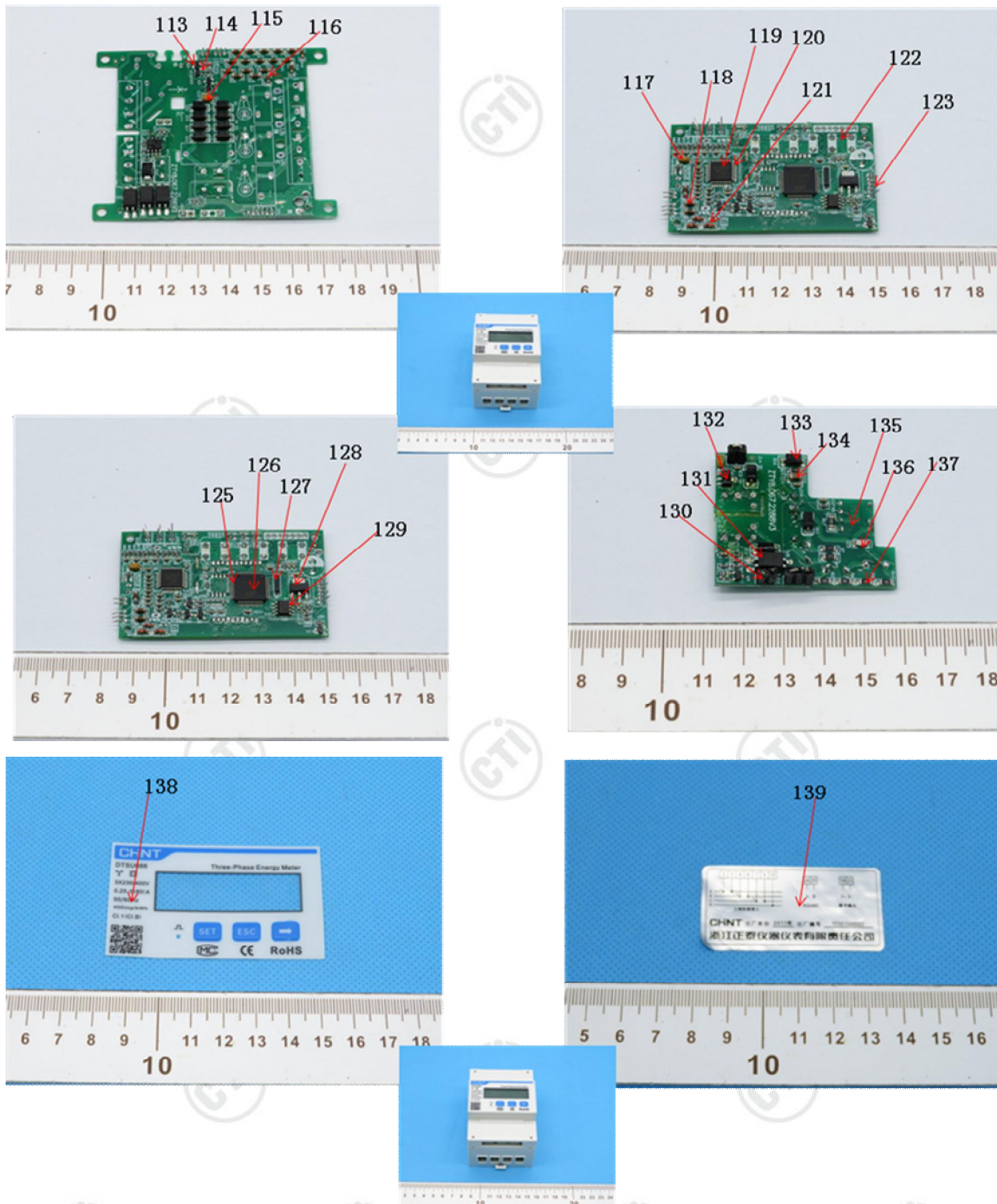
Page 53 of 62



Verification Report

Report No. A2180009119101001R1

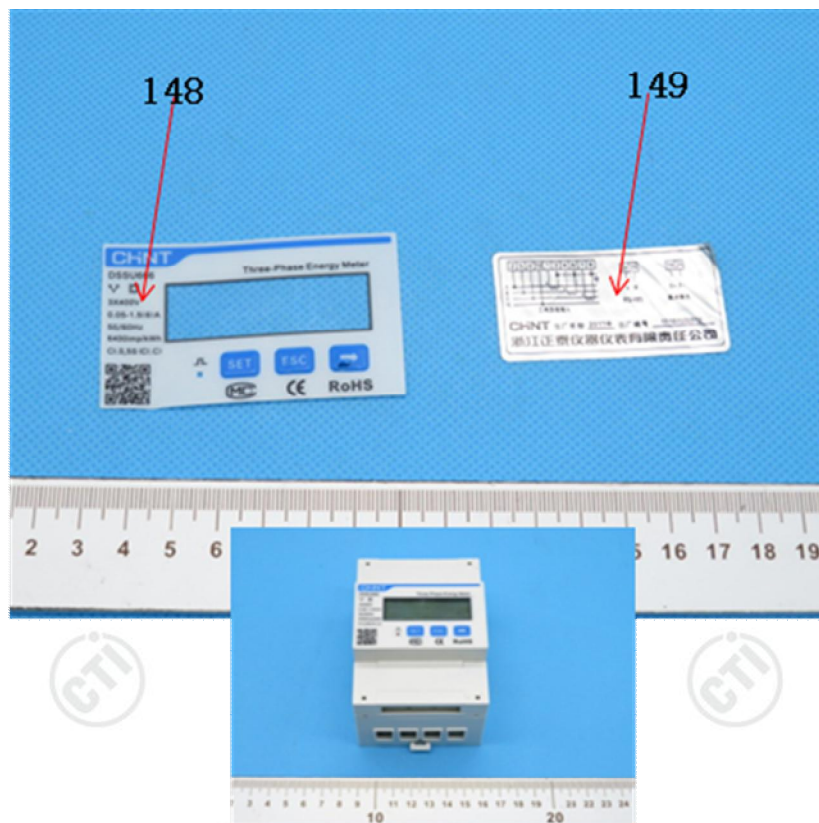
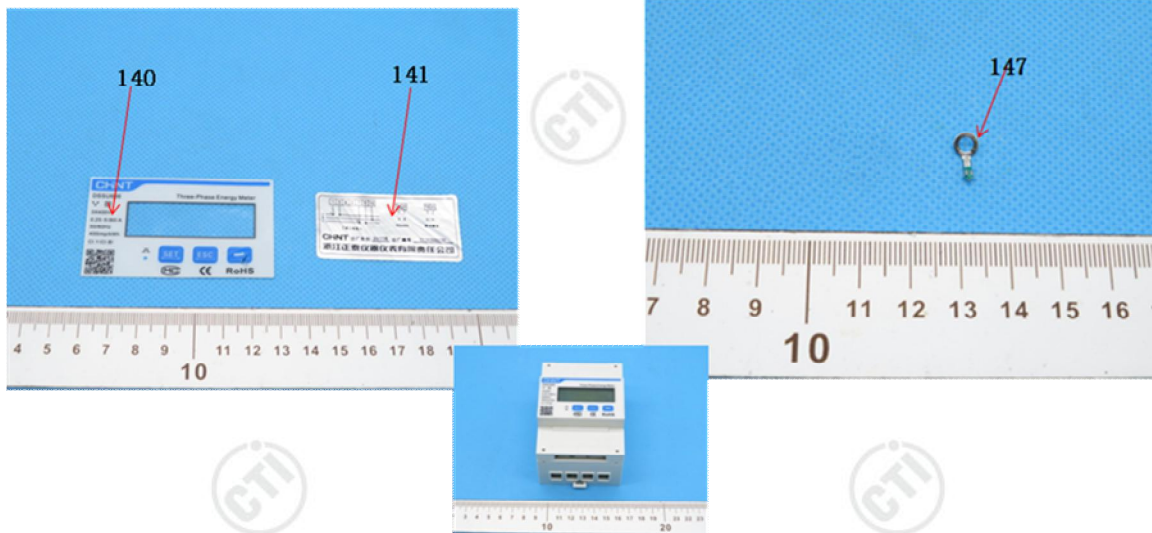
Page 54 of 62



Verification Report

Report No. A2180009119101001R1

Page 55 of 62



Verification Report

Report No. A2180009119101001R1

Page 56 of 62

Exempted Items of RoHS Directive

In accordance with Directive 2011/65/EU as amended, there are 41 exemption items in Annex III of 2011/65/EU altogether.

	Exemption	Scope and dates of applicability
1	Mercury in single capped (compact) fluorescent lamps not exceeding (per burner):	
1(a)	For general lighting purposes < 30 W: 5 mg	Expires on 31 December 2011; 3,5 mg may be used per burner after 31 December 2011 until 31 December 2012; 2,5 mg shall be used per burner after 31 December 2012.
1(b)	For general lighting purposes ≥ 30 W and < 50 W: 5 mg	Expires on 31 December 2011; 3,5 mg may be used per burner after 31 December 2011.
1(c)	For general lighting purposes ≥ 50 W and < 150 W: 5 mg	
1(d)	For general lighting purposes ≥ 150 W: 15 mg	
1(e)	For general lighting purposes with circular or square structural shape and tube diameter ≤ 17 mm	No limitation of use until 31 December 2011; 7 mg may be used per burner after 31 December 2011.
1(f)	For special purposes: 5 mg	
1(g)	For general lighting purposes < 30 W with a lifetime equal or above 20 000 h: 3,5 mg	Expires on 31 December 2017.
2(a)	Mercury in double-capped linear fluorescent lamps for general lighting purposes not exceeding (per lamp):	
2(a)(1)	Tri-band phosphor with normal lifetime and a tube diameter < 9 mm (e.g. T2): 5 mg	Expires on 31 December 2011; 4 mg may be used per lamp after 31 December 2011.
2(a)(2)	Tri-band phosphor with normal lifetime and a tube diameter ≥ 9 mm and ≤ 17 mm (e.g. T5): 5 mg	Expires on 31 December 2011; 3 mg may be used per lamp after 31 December 2011.
2(a)(3)	Tri-band phosphor with normal lifetime and a tube diameter > 17 mm and ≤ 28 mm (e.g. T8): 5 mg	Expires on 31 December 2011; 3,5 mg may be used per lamp after 31 December 2011.
2(a)(4)	Tri-band phosphor with normal lifetime and a tube diameter > 28 mm (e.g. T12): 5 mg	Expires on 31 December 2012; 3,5 mg may be used per lamp after 31 December 2012.
2(a)(5)	Tri-band phosphor with long lifetime (≥ 25 000 h): 8 mg	Expires on 31 December 2011; 5 mg may be used per lamp after 31 December 2011.
2(b)	Mercury in other fluorescent lamps not exceeding (per lamp):	
2(b)(1)	Linear halophosphate lamps with tube > 28 mm (e.g. T10 and T12): 10 mg	Expires on 13 April 2012.
2(b)(2)	Non-linear halophosphate lamps (all diameters): 15 mg	Expires on 13 April 2016.

Verification Report

Report No. A2180009119101001R1

Page 57 of 62

2(b)(3)	Non-linear tri-band phosphor lamps with tube diameter > 17 mm (e.g. T9)	No limitation of use until 31 December 2011; 15 mg may be used per lamp after 31 December 2011.
2(b)(4)	Lamps for other general lighting and special purposes (e.g. induction lamps).	No limitation of use until 31 December 2011; 15 mg may be used per lamp after 31 December 2011.
3	Mercury in cold cathode fluorescent lamps and external electrode fluorescent lamps (CCFL and EEFL) for special purposes not exceeding (per lamp):	
3(a)	Short length (≤ 500 mm)	No limitation of use until 31 December 2011; 3,5 mg may be used per lamp after 31 December 2011.
3(b)	Medium length (> 500 mm and $\leq 1\,500$ mm)	No limitation of use until 31 December 2011; 5 mg may be used per lamp after 31 December 2011.
3(c)	Long length (> 1500 mm)	No limitation of use until 31 December 2011; 13 mg may be used per lamp after 31 December 2011.
4(a)	Mercury in other low pressure discharge lamps (per lamp).	No limitation of use until 31 December 2011; 15 mg may be used per lamp after 31 December 2011.
4(b)	Mercury in High Pressure Sodium (vapour) lamps for general lighting purposes not exceeding (per burner) in lamps with improved colour rendering index $R_a > 60$:	
4(b)-I	$P \leq 155$ W	No limitation of use until 31 December 2011; 30 mg may be used per burner after 31 December 2011.
4(b)-II	$155\text{ W} < P \leq 405\text{ W}$	No limitation of use until 31 December 2011; 40 mg may be used per burner after 31 December 2011.
4(b)-III	$P > 405\text{ W}$	No limitation of use until 31 December 2011; 40 mg may be used per burner after 31 December 2011.
4(c)	Mercury in other High Pressure Sodium (vapour) lamps for general lighting purposes not exceeding (per burner):	
4(c)-I	$P \leq 155\text{ W}$	No limitation of use until 31 December 2011; 25 mg may be used per burner after 31 December 2011.
4(c)-II	$155\text{ W} < P \leq 405\text{ W}$	No limitation of use until 31 December 2011; 30 mg may be used per burner after 31 December 2011.
4(c)-III	$P > 405\text{ W}$	No limitation of use until 31 December 2011; 40 mg may be used per burner after 31 December 2011.
4(d)	Mercury in High Pressure Mercury (vapour) lamps (HPMV).	Expires on 13 April 2015.
4(e)	Mercury in metal halide lamps (MH)	

Verification Report

Report No. A2180009119101001R1

Page 58 of 62

4(f)	Mercury in other discharge lamps for special purposes not specifically mentioned in this Annex.	
4(g)	Mercury in hand crafted luminous discharge tubes used for signs, decorative or architectural and specialist lighting and light-artwork, where the mercury content shall be limited as follows: (a) 20 mg per electrode pair + 0,3 mg per tube length in cm ,but not more than 80 mg, for outdoor applications and indoor applications exposed to temperatures below 20°C; (b) 15 mg per electrode pair + 0,24 mg per tube length in cm, but not more than 80 mg, for all other indoor applications.	Expires on 31 December 2018.
5(a)	Lead in glass of cathode ray tubes.	
5(b)	Lead in glass of fluorescent tubes not exceeding 0,2 % by weight.	
6(a)	Lead as an alloying element in steel for machining purposes and in galvanized steel containing up to 0,35 % lead by weight.	
6(b)	Lead as an alloying element in aluminium containing up to 0,4 % lead by weight.	
6(c)	Copper alloy containing up to 4% lead by weight.	
7(a)	Lead in high melting temperature type solders (i.e. lead- based alloys containing 85 % by weight or more lead).	
7(b)	Lead in solders for servers, storage and storage array systems, network infrastructure equipment for switching, signalling, transmission, and network management for telecommunications.	
7(c)-I	Electrical and electronic components containing lead in a glass or ceramic other than dielectric ceramic in capacitors, e.g. piezoelectronic devices, or in a glass or ceramic matrix compound.	
7(c)-II	Lead in dielectric ceramic in capacitors for a rated voltage of 125 V AC or 250 V DC or higher.	
7(c)-III	Lead in dielectric ceramic in capacitors for a rated voltage of less than 125 V AC or 250 V DC.	Expires on 1 January 2013 and after that date may be used in spare parts for EEE placed on the market before 1 January 2013.

Verification Report

Report No. A2180009119101001R1

Page 59 of 62

7(c)-IV	Lead in PZT based dielectric ceramic materials for capacitors being part of integrated circuits or discrete semiconductors.	
8(a)	Cadmium and its compounds in one shot pellet type thermal cut-offs.	Expires on 1 January 2012 and after that date may be used in spare parts for EEE placed on the market before 1 January 2012.
8(b)	Cadmium and its compounds in electrical contacts.	
9	Hexavalent chromium as an anticorrosion agent of the carbon steel cooling system in absorption refrigerators up to 0,75 % by weight in the cooling solution.	
9(b)	Lead in bearing shells and bushes for refrigerant -containing compressors for heating, ventilation, air conditioning and refrigeration (HVACR) applications.	Applies to categories 8, 9 and 11; expires on: -21 July 2023 for category 8 in vitro diagnostic medical devices; -21 July 2024 for category 9 industrial monitoring and control instruments and for category 11; -21 July 2021 for other subcategories of categories 8 and 9.
9(b)-(I)	Lead in bearing shells and bushes for refrigerant -containing hermetic scroll compressors with a stated electrical power input equal or below 9 kW for heating, ventilation, air conditioning and refrigeration (HVACR) applications.	Applies to category 1; expires on 21 July 2019.
11(a)	Lead used in C-press compliant pin connector systems.	May be used in spare parts for EEE placed on the market before 24 September 2010.
11(b)	Lead used in other than C-press compliant pin connector systems.	Expires on 1 January 2013 and after that date may be used in spare parts for EEE placed on the market before 1 January 2013.
12	Lead as a coating material for the thermal conduction module C-ring.	May be used in spare parts for EEE placed on the market before 24 September 2010.
13(a)	Lead in white glasses used for optical applications.	Applies to all categories; expires on: -21 July 2023 for category 8 in vitro diagnostic medical devices; -21 July 2024 for category 9 industrial monitoring and control instruments and for category 11; -21 July 2021 for all other categories and subcategories.

Verification Report

Report No. A2180009119101001R1

Page 60 of 62

13(b)	Cadmium and lead in filter glasses and glasses used for reflectance standards.	Applies to categories 8, 9 and 11; expires on: -21 July 2023 for category 8 in vitro diagnostic medical devices; -21 July 2024 for category 9 industrial monitoring and control instruments and for category 11; -21 July 2021 for other subcategories of categories 8 and 9.
13(b)-(I)	Lead in ion coloured optical filter glass types.	Applies to categories 1 to 7 and 10; expires on 21 July 2021 for categories 1 to 7 and 10.
13(b)-(II)	Cadmium in striking optical filter glass types; excluding applications falling under point 39 of this Annex.	
13(b)-(III)	Cadmium and lead in glazes used for reflectance standards.	
14	Lead in solders consisting of more than two elements for the connection between the pins and the package of microprocessors with a lead content of more than 80 % and less than 85 % by weight.	Expires on 1 January 2011 and after that date may be used in spare parts for EEE placed on the market before 1 January 2011.
15	Lead in solders to complete a viable electrical connection between semiconductor die and carrier within integrated circuit flip chip packages.	
16	Lead in linear incandescent lamps with silicate coated tubes.	Expires on 1 September 2013.
17	Lead halide as radiant agent in high intensity discharge (HID) lamps used for professional reprography applications.	
18(a)	Lead as activator in the fluorescent powder (1 % lead by weight or less) of discharge lamps when used as speciality lamps for diazoprinting reprography, lithography, insect traps, photochemical and curing processes containing phosphors such as SMS ((Sr,Ba) ₂ MgSi ₂ O ₇ :Pb).	Expires on 1 January 2011.
18(b)	Lead as activator in the fluorescent powder (1 % lead by weight or less) of discharge lamps when used as sun tanning lamps containing phosphors such as BSP (BaSi ₂ O ₅ :Pb).	
19	Lead with PbBiSn-Hg and PbInSn-Hg in specific compositions as main amalgam and with PbSn-Hg as auxiliary amalgam in very compact energy saving lamps (ESL).	Expires on 1 June 2011.

Verification Report

Report No. A2180009119101001R1

Page 61 of 62

20	Lead oxide in glass used for bonding front and rear substrates of flat fluorescent lamps used for Liquid Crystal Displays (LCDs).	Expires on 1 June 2011.
21	Lead and cadmium in printing inks for the application of enamels on glasses, such as borosilicate and soda lime glasses.	
23	Lead in finishes of fine pitch components other than connectors with a pitch of 0, 65 mm and less.	May be used in spare parts for EEE placed on the market before 24 September 2010.
24	Lead in solders for the soldering to machined through hole discoidal and planar array ceramic multilayer capacitors.	
25	Lead oxide in surface conduction electron emitter displays (SED) used in structural elements, notably in the seal frit and frit ring.	
26	Lead oxide in the glass envelope of black light blue lamps.	Expires on 1 June 2011.
27	Lead alloys as solder for transducers used in high-powered (designated to operate for several hours at acoustic power levels of 125 dB SPL and above) loudspeakers.	Expired on 24 September 2010.
29	Lead bound in crystal glass as defined in Annex I (Categories 1, 2, 3 and 4) of Council Directive 69/493/EEC.	
30	Cadmium alloys as electrical/mechanical solder joints to electrical conductors located directly on the voice coil in transducers used in high-powered loudspeakers with sound pressure levels of 100 dB (A) and more.	
31	Lead in soldering materials in mercury free flat fluorescent lamps (which e.g. are used for liquid crystal displays, design or industrial lighting).	
32	Lead oxide in seal frit used for making window assemblies for Argon and Krypton laser tubes.	
33	Lead in solders for the soldering of thin copper wires of 100 µm diameter and less in power transformers.	
34	Lead in cermet-based trimmer potentiometer elements.	
36	Mercury used as a cathode sputtering inhibitor in DC plasma displays with a content up to 30 mg per display.	Expired on 1 July 2010.
37	Lead in the plating layer of high voltage diodes on the basis of a zinc borate glass body.	
38	Cadmium and cadmium oxide in thick film pastes used on aluminium bonded beryllium oxide.	

Verification Report

Report No. A2180009119101001R1

Page 62 of 62

39	Cadmium in colour converting II-VI LEDs (< 10 µg Cd per mm ² of light-emitting area) for use in solid state illumination or display systems.	Expires on 1 July 2014.
40	Cadmium in photoresistors for analogue optocouplers applied in professional audio equipment.	Expires on 31 December 2013.
41	Lead in solders and termination finishes of electrical and electronic components and finishes of printed circuit boards used in ignition modules and other electrical and electronic engine control systems, which for technical reasons must be mounted directly on or in the crankcase or cylinder of hand-held combustion engines (classes SH:1, SH:2, SH:3 of Directive 97/68/EC of the European Parliament and of the Council.	Expires on 31 December 2018.

*** End of Report ***

Statement:

1. This report is considered invalidated without approval signature, special seal and the seal on the perforation;
2. The sample(s) and sample Information was/were provided by the client who should be responsible for the authenticity which CTI hasn't verified;
3. The result(s) shown in this report refer(s) only to the sample(s) tested;
4. Without written approval of CTI, this report can't be reproduced except in full;
5. In case of any discrepancy between the English version and Chinese version of the testing reports (if generated), the Chinese version shall prevail.

华测检测
有限公司