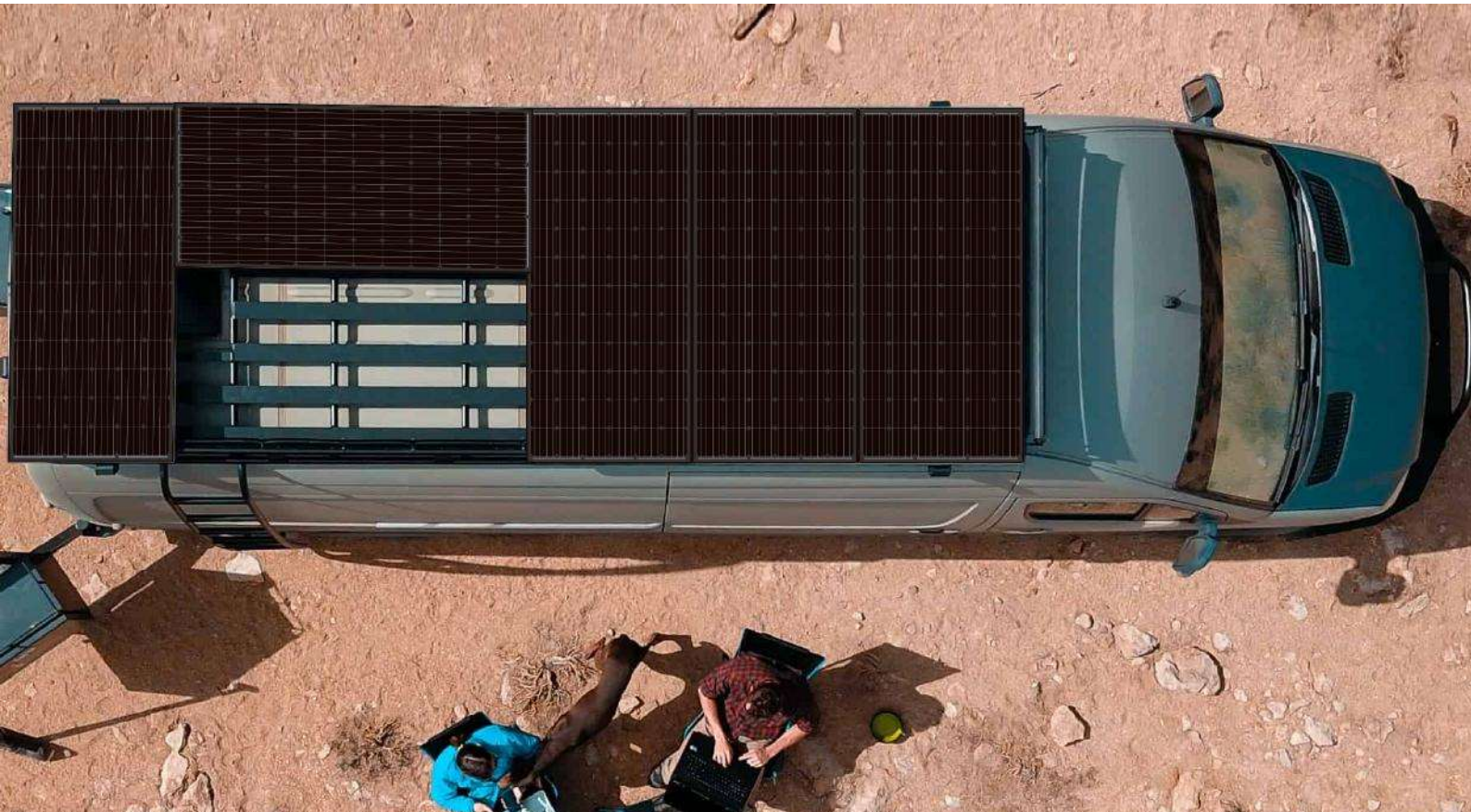




BLUESUN SOLAR CO.,LTD



Mono Shingled Solar Panels

110W/170W

Your
Best
PV
Supplier



Why Choose Us

No.1 supplier of all-black shingle customized series

30 Years -year power output guarantee

300+ MW Share 10% of the market

Diverse Application



Easy Installation



High Aesthetic Value



Wind, High Temperature Resistant



Great Power Performance Under Weak Light



Operating cost of a solar ship is only 17% compared with that of an ordinary diesel-powered ship



Innovation
Make Panels
Thinner And More Efficient



Monocrystalline solar module

Model	Dimensions	Weight
110W	1480*676*30mm	11.18kg
170W	1580*808*35mm	15.6kg

Shingled all black solar module

Model	Dimensions	Weight
110W	1160*450*30mm	5.6kg
170W	1230*670*30mm	8.6kg



+86-158-5821-3997



info@bluesunpv.com



+86-551-6520-3660



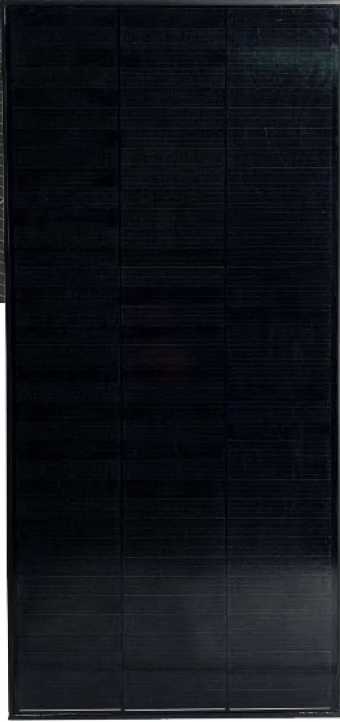
1499 Zhenxing Road, Shushan District, 230031 Hefei, China

www.bluesunpv.com



▼ **FULL BLACK**

Mono Shingled Solar Panels



Mechanical Data

Standard Test Conditions AM=1.5, E=1000W/m², TC=25°C

Nominal Power	110W
Cell Type	Monocrystalline
Module	21.1%
Maximum Power Current (Impp)	4.97A
Maximum Power Voltage (Vmpp)	22.12V
Open-circuit Voltage (Voc)	26.29V
Short-circuit Current (Isc)	5.27A
Maximum System Voltage	500V
Output Tolerance	+3%
Cable	700mm / 2.5mm ²
Connector Type	MC4 / MC4 Compatible
Module Structure	Aluminum Frame / Glass / EVA / Backsheet (White)
Junction box rating	≥ IP67
Number of Diodes	One
Working Temperature	-40°C ~ +80°C

Packaging

Module Dimensions	1160*450*30mm
Module Weight	5.6kg
Package	Single Package
Pieces per Pallet	56
Gross Weight per Pallet	407kg
Pallet Dimensions	1200*1000*1070mm

BSM110PM5-S

Warranty

5 years Manufacturer Warranty
Warranty on Electrical Performance: 15 years 90%
+ 30 years 80% of power output

Manufacturing

Original cell sorting system ensures the best electric cell match
EL-Testing before packing.
Comprehensive module power testing.

Performance

Higher module efficiency and compact size.
Weakened hot-spot effect, lower module failure rate and increased stability by shingle-tech.
Special connection method lowers the internal resistance and ensures better performance than traditional connection with busbar.
IP67 rated junction box, reliable cables and standard MC4 connectors improve the stability



+86-158-5821-3997



info@bluesunpv.com



+86-551-6520-3660



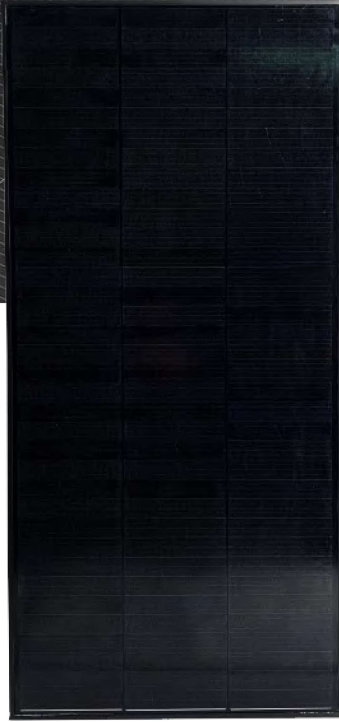
1499 Zhenxing Road, Shushan District, 230031 Hefei, China

www.bluesunpv.com



▼ **FULL BLACK**

Mono Shingled Solar Panels



BSM170PM5-S

Warranty

- ◆ 5 years Manufacturer Warranty
- ◆ Warranty on Electrical Performance: 15 years 90% + 30 years 80% of power output

Manufacturing

- ◆ Original cell sorting system ensures the best electric cell match
- ◆ EL-Testing before packing.
- ◆ Comprehensive module power testing.

Performance

- ◆ Higher module efficiency and compact size. Weakened hot-spot effect, lower module failure rate and increased stability by shingle-tech.
- ◆ Special connection method lowers the internal resistance and ensures better performance than traditional connection with busbar.
- ◆ IP67 rated junction box, reliable cables and standard MC4 connectors improve the stability

Mechanical Data

Standard Test Conditions AM=1.5, E=1000W/m², TC=25°C

Nominal Power	170W
Cell Type	Monocrystalline
Module	20.6%
Maximum Power Current (I _{mpp})	7.14A
Maximum Power Voltage (V _{mpp})	23.82V
Open-circuit Voltage (V _{oc})	28.31V
Short-circuit Current (I _{sc})	7.57A
Maximum System Voltage	500V
Output Tolerance	+3%
Cable	900mm / 2.5mm ²
Connector Type	MC4 / MC4 Compatible
Module Structure	Aluminum Frame / Glass / EVA / Backsheet (White)
Junction box rating	≥ IP67
Number of Diodes	One
Working Temperature	-40°C ~ +80°C

Packaging

Module Dimensions	1230*670*30mm
Module Weight	8.6kg
Package	Single Package
Pieces per Pallet	56
Gross Weight per Pallet	575kg
Pallet Dimensions	1250*1000*1510mm

