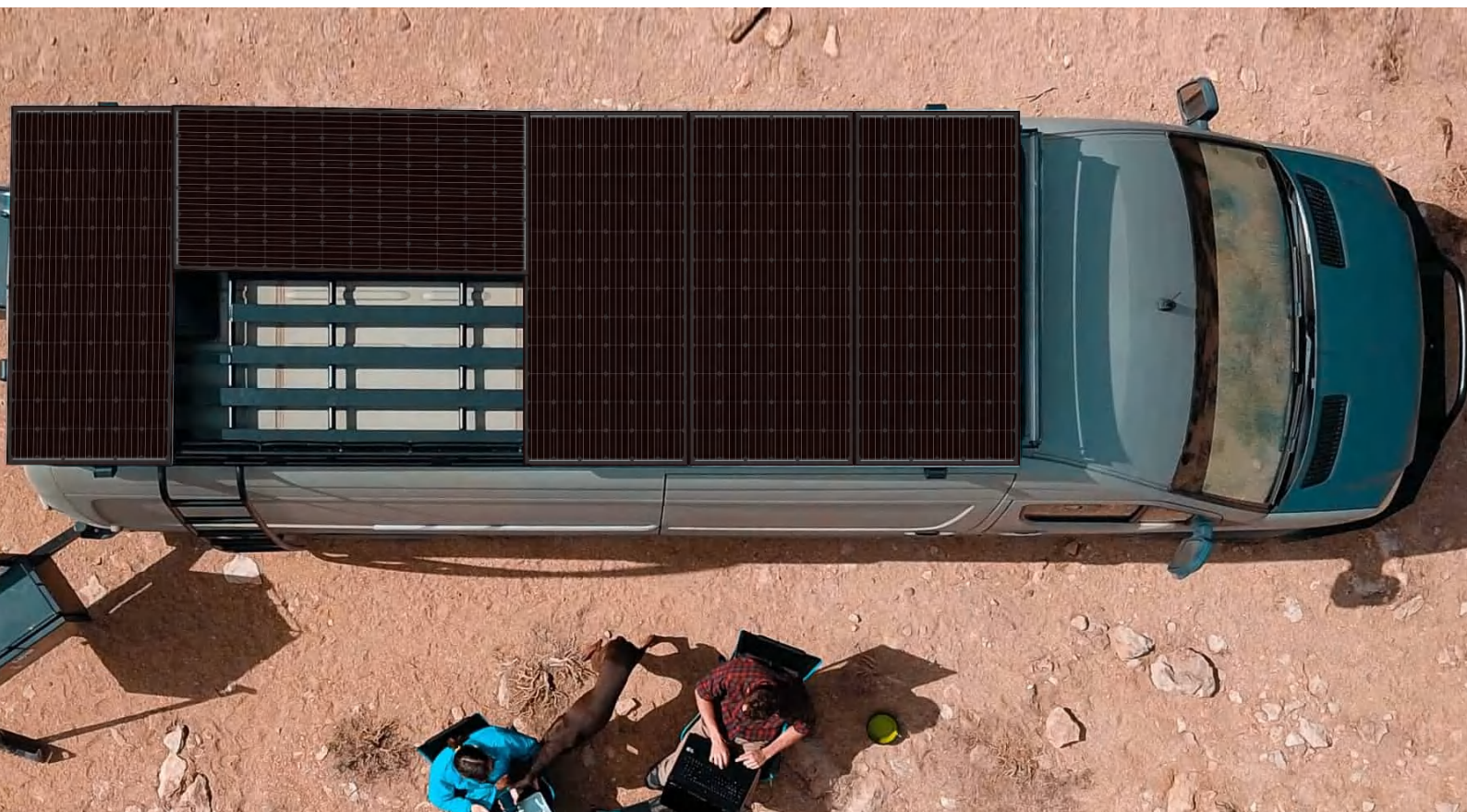




**BLUESUN SOLAR CO.,LTD**



# Mono Shingled Solar Panels

70W/110W/170W

Your  
**Best**  
PV  
Supplier








## Why Choose Us

**No.1** supplier of all-black shingle customized series

**30** Years -year power output guarantee

**300+** MW Share 10% of the market

## Diverse Application

-  Easy Installation
-  High Aesthetic Value
-  Wind, High Temperature Resistant
-  Great Power Performance Under Weak Light
-  Operating cost of a solar ship is only 17% compared with that of an ordinary diesel-powered ship



Innovation  
Make Panels  
Thinner And More Efficient



### Monocrystalline solar module

Model	Dimensions	Weight
110W	1480*676*30mm	11.18kg
170W	1580*808*35mm	15.6kg

### Shingled all black solar module

Model	Dimensions	Weight
110W	1190*450*30mm	6.3kg
170W	1230*670*30mm	9.0kg





▼ **FULL BLACK**

*Mono Shingled Solar Panels*



# BSM70PM5-S

## Warranty

5 years Manufacturer Warranty  
Warranty on Electrical Performance: 15 years 90%  
+ 30 years 80% of power output

## Manufacturing

Original cell sorting system ensures the best electric cell match  
EL-Testing before packing.  
Comprehensive module power testing.

## Performance

Higher module efficiency and compact size.  
Weakened hot-spot effect, lower module failure rate and increased stability by shingle-tech.  
Special connection method lowers the internal resistance and ensures better performance than traditional connection with busbar.  
IP67 rated junction box, reliable cables and standard MC4 connectors improve the stability

### Mechanical Data

Standard Test Conditions AM=1.5, E=1000W/m<sup>2</sup>, TC=25°C

Nominal Power	70W
Cell Type	Monocrystalline
Cell Efficiency	21.4%
Maximum Power Current (Impp)	3.74A
Maximum Power Voltage (Vmpp)	18.70V
Open-circuit Voltage (Voc)	22.10V
Short-circuit Current (Isc)	4.25A
Maximum System Voltage	500V
Output Tolerance	+3%
Cable	900mm / 1.5mm <sup>2</sup>
Connector Type	MC4 / MC4 Compatible
Module Structure	Aluminum Frame / Glass / EVA / Backsheet (White)
Junction box rating	≥ IP67
Number of Diodes	One
Working Temperature	-40°C ~ +80°C

### Packaging

Module Dimensions	1050*350*30mm
Module Weight	5.42kg
Package	Single Package
Pieces per Pallet	30
Gross Weight per Pallet	200kg
Pallet Dimensions	1200*1100*510mm



+86-158-5821-3997



info@bluesunpv.com



+86-551-6520-3660



1499 Zhenxing Road, Shushan District, 230031 Hefei, China

www.bluesunpv.com



▼ **FULL BLACK**

*Mono Shingled Solar Panels*



**Mechanical Data**

Standard Test Conditions AM=1.5, E=1000W/m<sup>2</sup>, TC=25°C

Nominal Power	110W
Cell Type	Monocrystalline
Cell Efficiency	21.4%
Maximum Power Current (Impp)	4.91A
Maximum Power Voltage (Vmpp)	22.40V
Open-circuit Voltage (Voc)	26.40V
Short-circuit Current (Isc)	5.33A
Maximum System Voltage	500V
Output Tolerance	+3%
Cable	900mm / 2.5mm <sup>2</sup>
Connector Type	MC4 / MC4 Compatible
Module Structure	Aluminum Frame / Glass / EVA / Backsheet (White)
Junction box rating	≥ IP67
Number of Diodes	One
Working Temperature	-40°C ~ +80°C

**Packaging**

Module Dimensions	1190*450*30mm
Module Weight	6.3kg
Package	Single Package
Pieces per Pallet	30
Gross Weight per Pallet	225kg
Pallet Dimensions	1200*1100*610mm

**BSM110PM5-S**

**Warranty**

5 years Manufacturer Warranty  
Warranty on Electrical Performance: 15 years 90%  
+ 30 years 80% of power output

**Manufacturing**

Original cell sorting system ensures the best electric cell match  
EL-Testing before packing.  
Comprehensive module power testing.

**Performance**

Higher module efficiency and compact size.  
Weakened hot-spot effect, lower module failure rate and increased stability by shingle-tech.  
Special connection method lowers the internal resistance and ensures better performance than traditional connection with busbar.  
IP67 rated junction box, reliable cables and standard MC4 connectors improve the stability



+86-158-5821-3997



info@bluesunpv.com



+86-551-6520-3660



1499 Zhenxing Road, Shushan District, 230031 Hefei, China

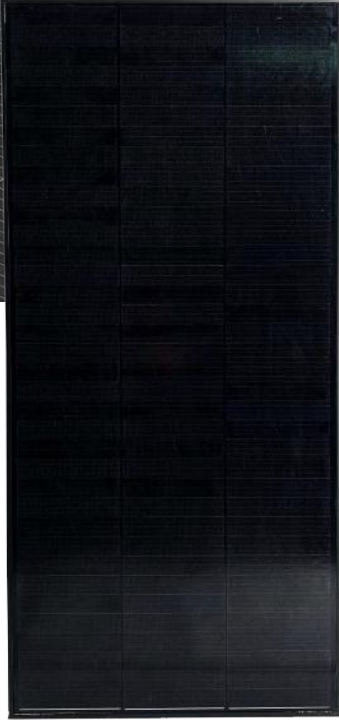
www.bluesunpv.com





▼ **FULL BLACK**

*Mono Shingled Solar Panels*



# BSM170PM5-S

## Warranty

- ◆ 5 years Manufacturer Warranty
- ◆ Warranty on Electrical Performance: 15 years 90% + 30 years 80% of power output

## Manufacturing

- ◆ Original cell sorting system ensures the best electric cell match
- ◆ EL-Testing before packing.
- ◆ Comprehensive module power testing.

## Performance

- ◆ Higherer module efficiency and compactsize. Weakened hot-spot effect, lower module failure rate and increased stability by shingle-tech.
- ◆ Special connection method lowers the internal resistance and ensures better performance than traditional connection with busbar.
- ◆ IP67 rated junction box, reliable cables and standard MC4 connectors improve the stability

### Mechanical Data

Standard Test Conditions AM=1.5, E=1000W/m2, TC=25°C

Nominal Power	170W
Cell Type	Monocrystalline
Cell Efficiency	21.4%
Maximum Power Current (Impp)	7.54A
Maximum Power Voltage (Vmpp)	22.55V
Open-circuit Voltage (Voc)	26.65V
Short-circuit Current (Isc)	8.05A
Maximum System Voltage	500V
Output Tolerance	+3%
Cable	900mm / 2.5mm2
Connector Type	MC4 / MC4 Compatible
Module Structure	Aluminum Frame / Glass / EVA / Backsheet (White)
Junction box rating	≥ IP67
Number of Diodes	One
Working Temperature	-40°C~+80°C

### Packaging

Module Dimensions	1230*670*30mm
Module Weight	9.0kg
Package	Single Package
Pieces per Pallet	28
Gross Weight per Pallet	300kg
Pallet Dimensions	1240*1100*830mm



+86-158-5821-3997



info@bluesunpv.com



+86-551-6520-3660



1499 Zhenxing Road, Shushan District, 230031 Hefei, China

www.bluesunpv.com

